



Gloucester Avenue, NW1

£588 Per week

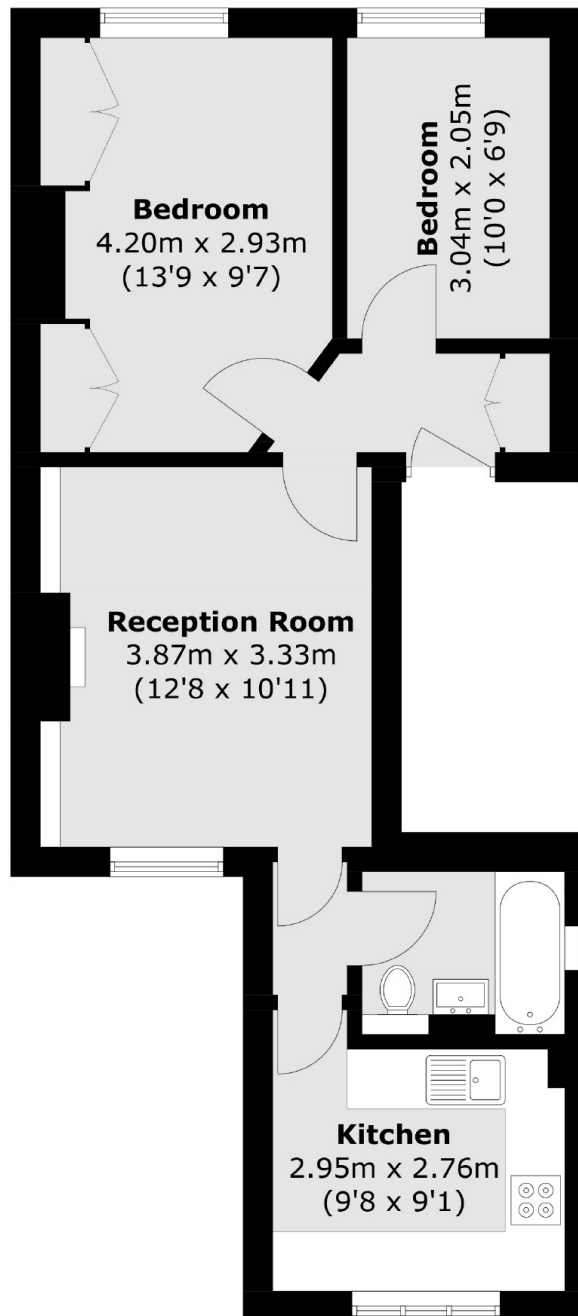
A recently refurbished two double bedroom apartment in a period conversion in Primrose Hill. Spacious reception room with separate brand new kitchen, two bedrooms and new bathroom.

Gloucester Avenue is located close to all local shops, restaurants and cafés on Regents Park Road and a short distance to Primrose Hill.

Features

- Two Bedrooms
- Brand New Kitchen and Bathroom
- Primrose Hill
- First Floor
- Recently Refurbished

Gloucester Avenue,
London, NW1



Total area (approx.): 47.9 sq. m (515.6 sq. ft)