



Middle Field, NW8

£2,500 Per week

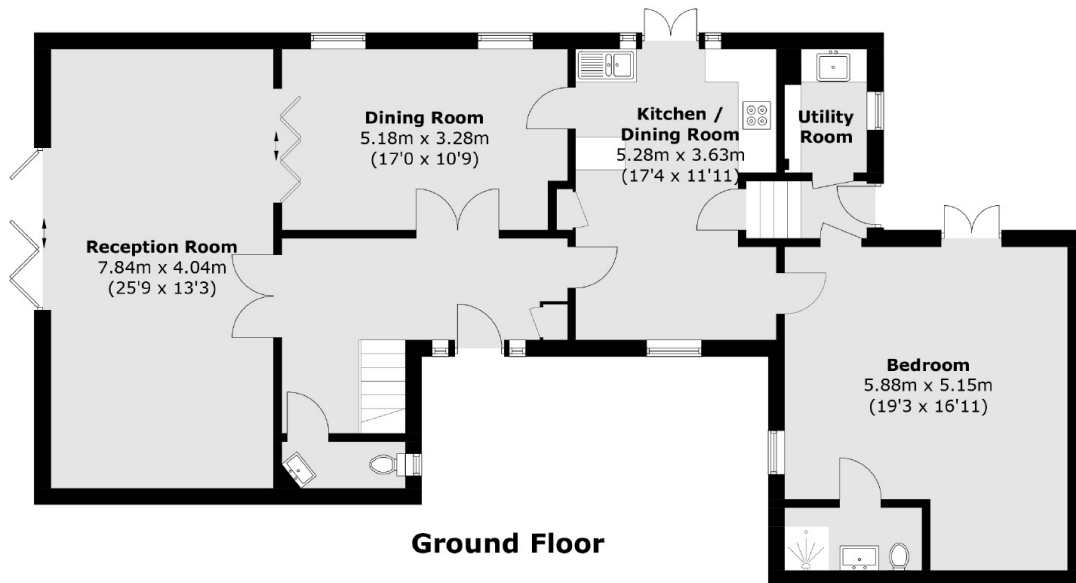
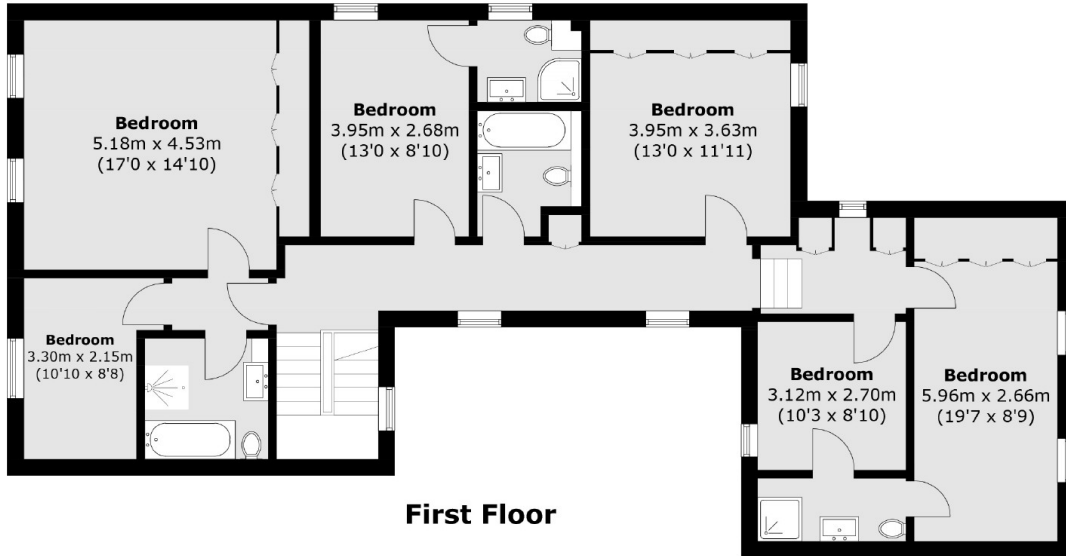
A newly decorated seven bedroom, five bathroom house arranged over two floors with large rear garden and off street parking for two cars.

Middle Field is ideally located in between St Johns Wood and Swiss Cottage giving residents great transport links into the city and a range of shops, restaurants and supermarkets on Finchley Road.

Features

Newly Decorated
Seven Bedroom House
Five Bathrooms
Arranged Over Two Floors
Rear Garden
Parking For Two Cars

Middle Field, London, NW8



Total area (approx.): 247.5 sq. m (2,663.9 sq. ft)