



Park Road, NW8

£5,355 Per week

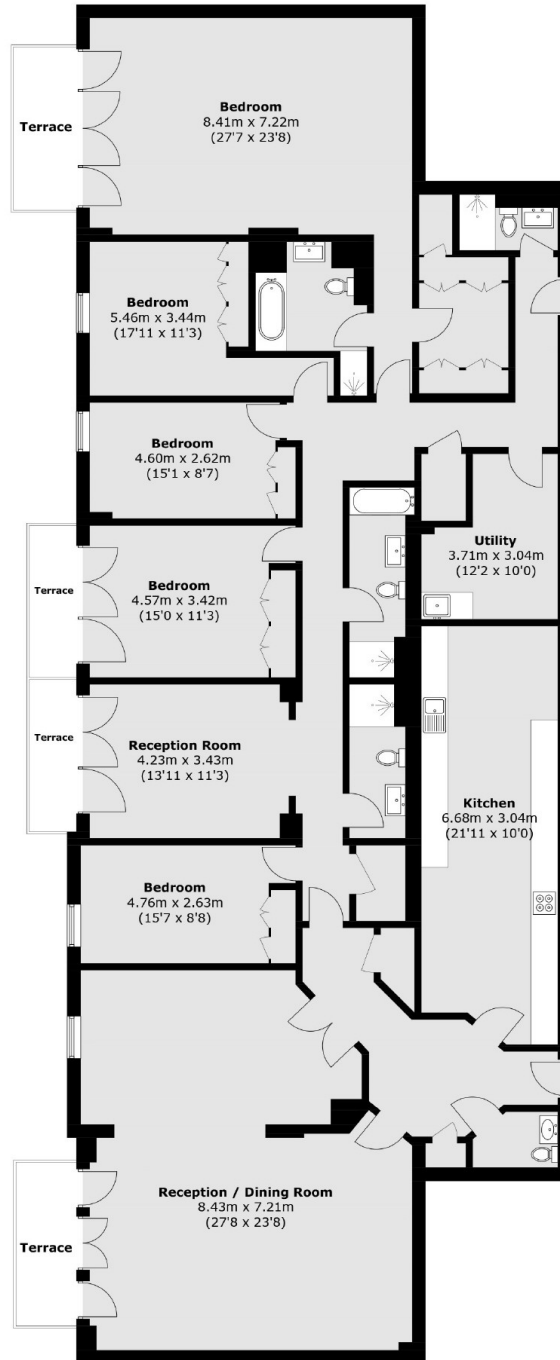
A lateral apartment situated on the second floor of a prestigious building opposite Regents Park. The property has been refurbished to the highest of standards to maintain a feeling of continuity throughout the apartment.

Situated directly opposite the park, this property is in a desirable location. Within walking distance is Marylebone High Street offering a range of restaurants and shops.

Features

- Lateral
- Newly Refurbished
- Five Double Bedrooms
- Four Bathrooms
- Second Floor With Lift
- 24 Hour Porter

Park Road,
London, NW8



Total area (approx.): 288.5 sq. m (3,105.4 sq. ft)
Terrace area : 17.2 sq. m (185.1 sq. ft)