



Abbey Road, NW8

£1,350,000

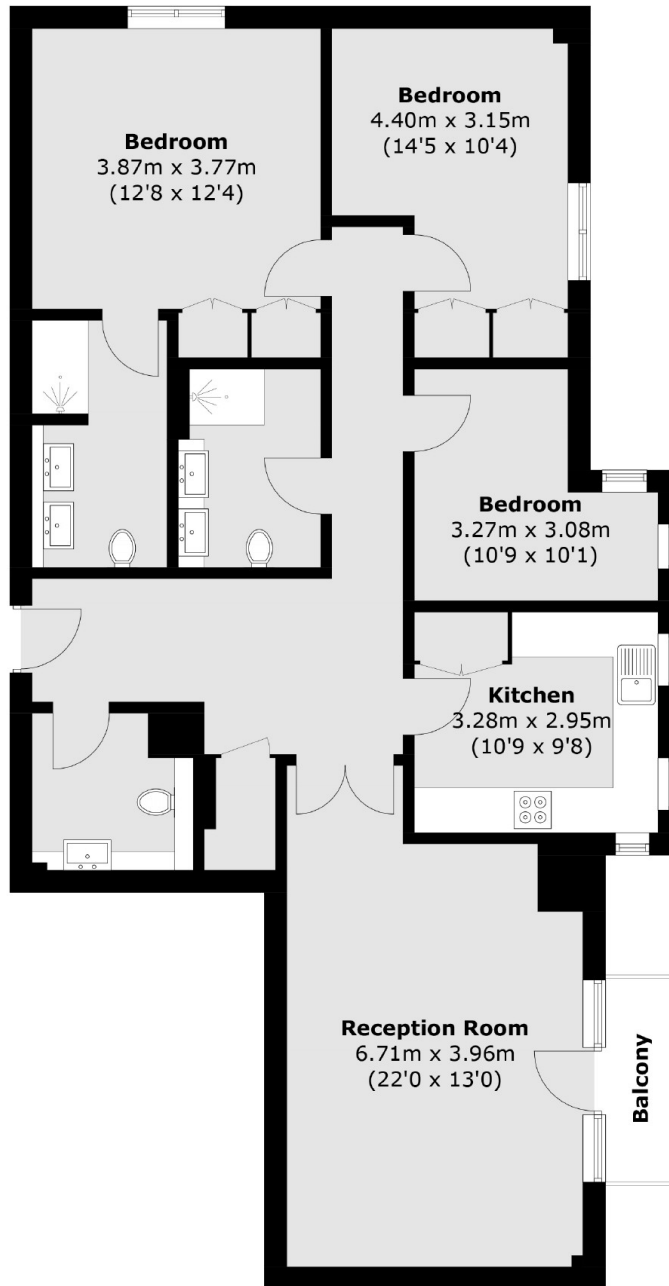
A three double bedroom apartment on the third floor of a modern, 24 hour portered building. The apartment features a spacious reception room, a separate kitchen, a private balcony, wooden floors throughout and is available chain free.

Located close to the world famous recording studios and Beatles crossing and the boutiques, shops, cafés and restaurants on the High Street. St John's Wood station (Jubilee line) and Maida Vale are within walking distance.

Features

- Three Double Bedrooms
- Private Balcony
- Wooden Floor Throughout
- Communal Swimming Pool
- 24 Hour Porter
- Underground Parking

Abbey Road, London, NW8



Total area (approx.): 107.2 sq. m (1153.9 sq. ft)
Balcony: 2.6 sq. m (28.0 sq. ft)