



Abbey Road, NW8

£923 Per week

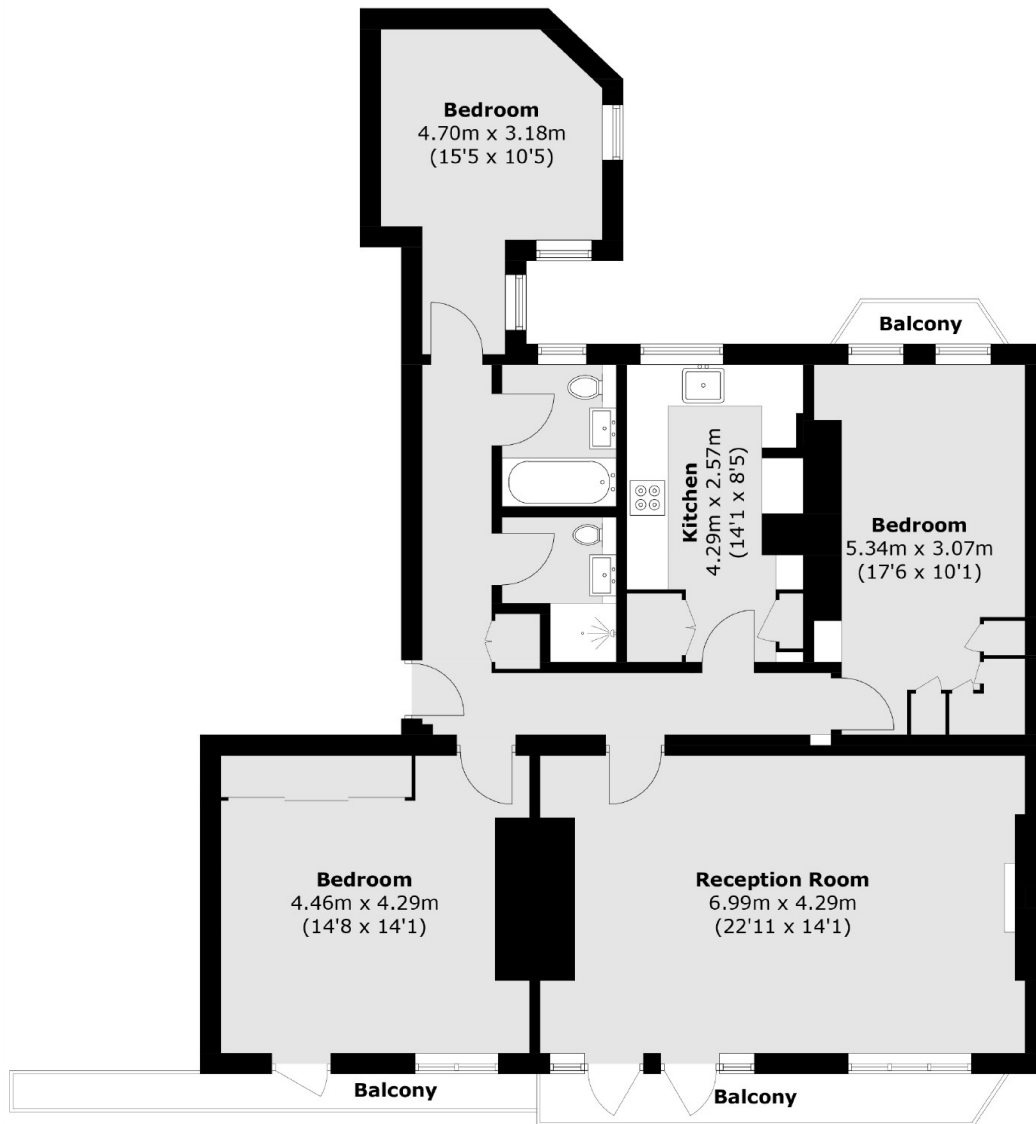
Modern apartment on the third floor, set within a portered mansion block on Abbey Road. There is a spacious reception room, three double bedrooms, separate kitchen and two bathrooms.

Abbey Court is located less than half a mile to St Johns Wood Underground Station and High Street.

Features

- New Refurbishment
- Three Double Bedrooms
- Two Bathrooms
- Separate Kitchen
- Wood Floors
- Porter
- Recently Refurbished

Abbey Road,
London, NW8



Total area (approx.): 111.0 sq. m (1,194.8 sq. ft)
Balcony: 9.5 sq. m (102.2 sq. ft)