



Abbey Road, NW8

£700,000

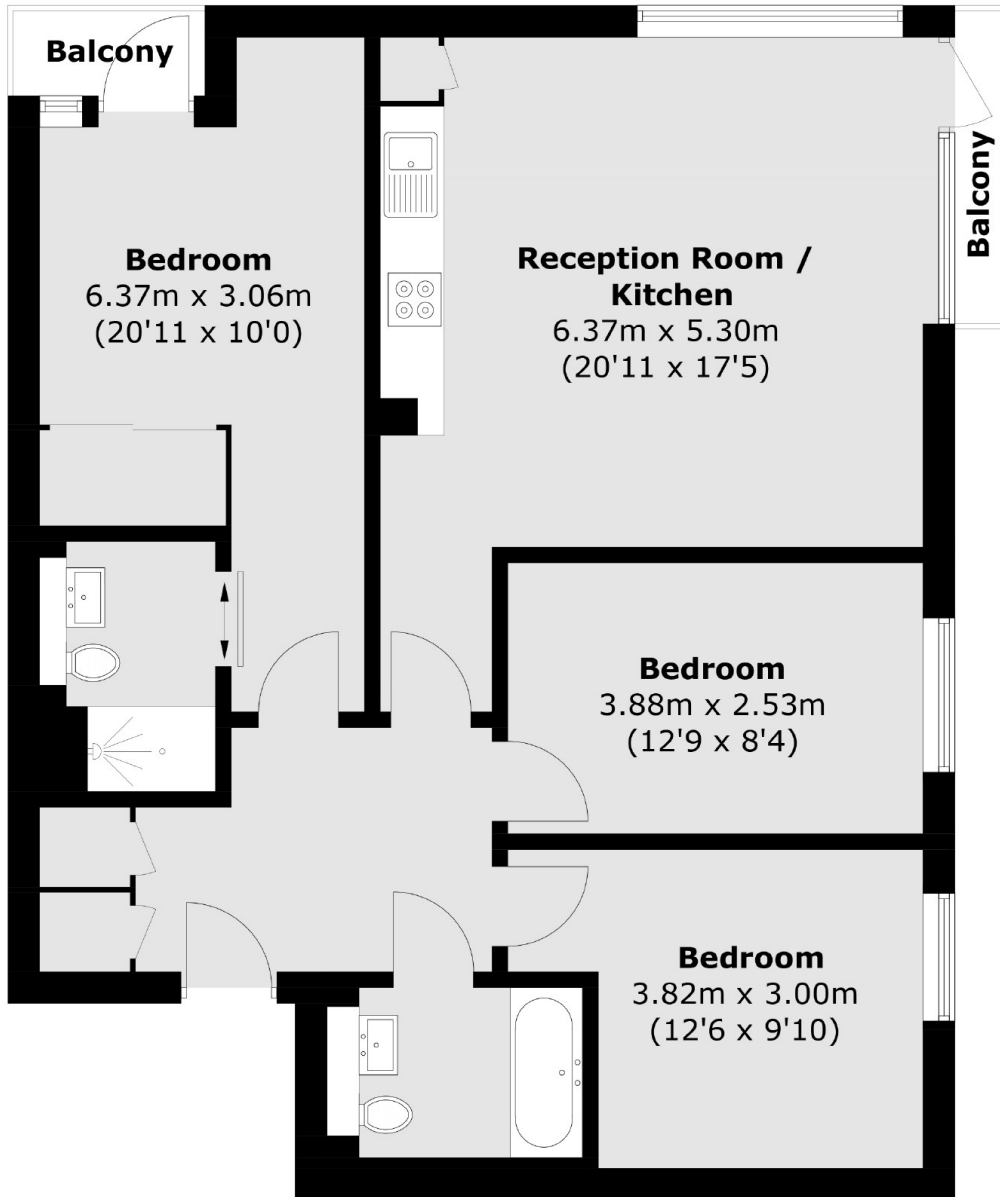
This practical three bedroom purpose built flat situated on the third floor benefits from two balconies and one en-suite, one family bathroom and a open-plan reception room with an integrated kitchen giving you quick access to St John's Wood tube station.

Located close to the world famous recording studios and Beatles crossing. The flat is within close proximity to St John's Wood High Street and underground station (Jubilee Line) which provides access to the West End, whilst Maida Vale underground (Bakerloo Line) is also within close proximity.

Features

- Entry Phone & Lift Access
- Three Double Bedrooms
- Two Balconies
- Long Leasehold
- Open Plan Reception
- Great Transport Links

Abbey Road, London, NW8



Third Floor

Total area (approx.): 82.5 sq. m (888.0 sq. ft)
Balcony : 2.9 sq. m (31.2 sq. ft)