



Abbey Road, NW8

£500,000

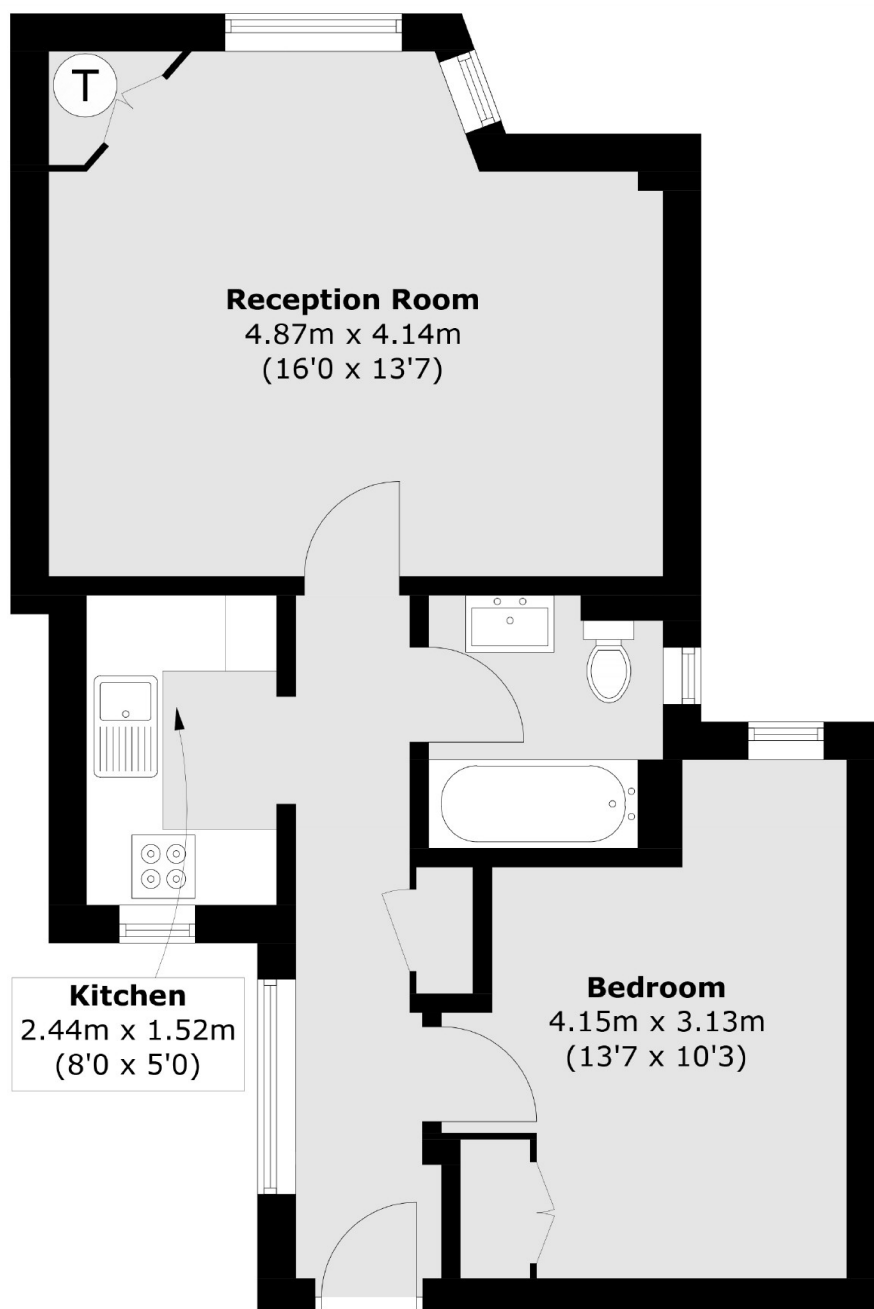
A one double bedroom apartment in a portered block in St Johns Wood. Bright reception room with a private balcony, separate kitchen with built in storage and a family bathroom.

Neville Court is located on Abbey Road which is a short walk from St John's Wood tube station giving you quick access to the City, Canary Wharf and Central London on the Jubilee Line.

Features

- One Double Bedroom
- Share Of Freehold
- Porterage
- Private Balcony
- Lift Access
- Great Transport Links

Abbey Road, London, NW8



Total area (approx.): 45.0 sq. m (484.3 sq. ft)