



Belgrave Gardens, NW8

£600,000

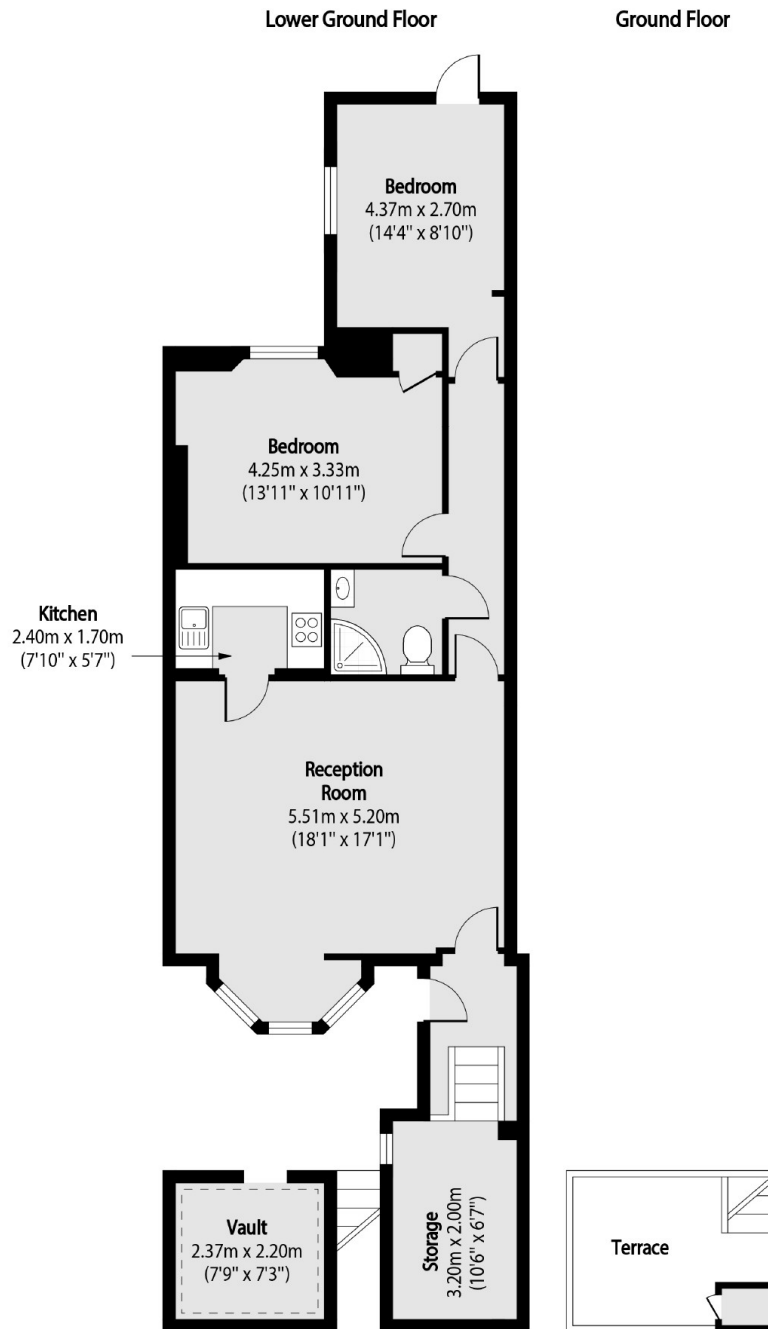
An attractive two double bedroom garden flat within a Victorian conversion. The flat offers a private entrance, an open plan reception/kitchen, a family bathroom and a private rear garden off one of the bedrooms.

Located on a quiet residential street in St John's Wood, the property is within easy reach of the local shops on St Johns Wood High Street, and the amenities on Boundary Road.

Features

- Two Double Bedrooms
- Freehold
- Private Entrance
- Private Garden
- Chain Free
- Desirable Location

Belgrave Gardens, London, NW8



Total area (approx): 73.93 sq m (796 sq. ft)

Terrace total area (approx): 6.78 sq m (72.98 sq. ft)