



Grove End Road, NW8

£650,000

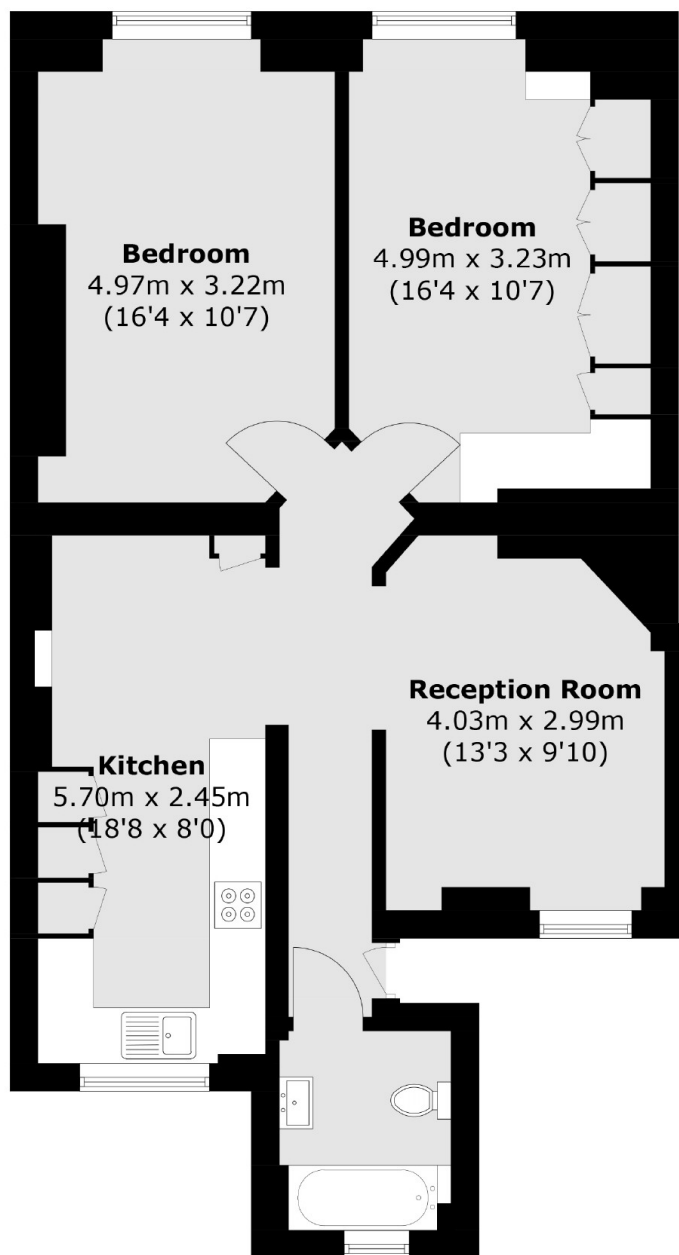
A two double bedroom apartment on the fourth floor (with lift) of a period portered block, with access to a stunning communal garden. It benefits from a spacious reception room, a separate kitchen, a family bathroom and is available chain free.

Grove End Road is moments from Lords Cricket Ground, the open green space of Regents Park and the local shops, restaurants and cafés in Little Venice. St. John's Wood station (Jubilee line) is approximately half a mile from Grove End Road.

Features

- Two Double Bedroom
- Lift Access
- Ample Storage
- Porter Service
- Chain Free
- Great Transport Links

Grove End Road, London, NW8



Total area (approx.): 72.1 sq. m (776.1 sq. ft)