



Ainger Road, NW3

£575,000

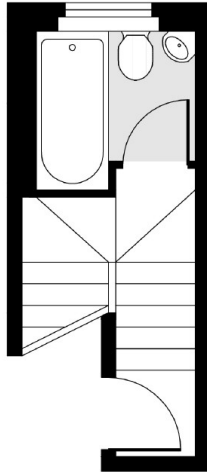
A charming one bedroom top floor flat set in this Victorian Conversion. Situated in a sought-after location, this property offers not only a comfortable open plan living space but also a private roof terrace.

Ainger Road runs parallel to Regents Park Road where there is a selection of fashionable shops, cafés and restaurants. The entrance to Primrose Hill Park is at the top of the road and where you can enjoy great views over the London skyline. St Paul's Primary School, Chalk Farm station (Northern line) and numerous bus routes are within half a mile.

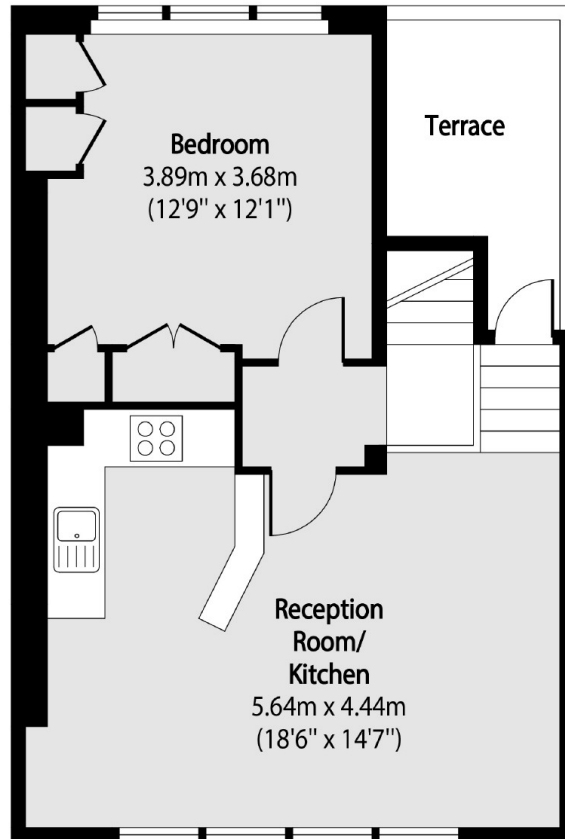
Features

- Share Of Freehold
- Open Plan Reception/Kitchen
- Private Roof Terrace
- Sought-After Location
- Chain Free
- Top Floor Flat

Ainger Road, London, NW3



Second Floor
Entrance



Third Floor

Total area (approx): 48.49 sq m (522 sq. ft)

Terrace area (approx): 4.92 sq m (53 sq. ft)