

Circus Road, NW8

£403 Per week

A spacious one double bedroom apartment on the first floor of a portered building with communal garden. Bright reception room with balcony, modern kitchen, double bedroom with built in wardrobes and bathroom with shower over bath. Communal hot water included within

Circus Lodge is located a short distance from the range of shops, cafés and restaurants on St Johns Wood High Street.

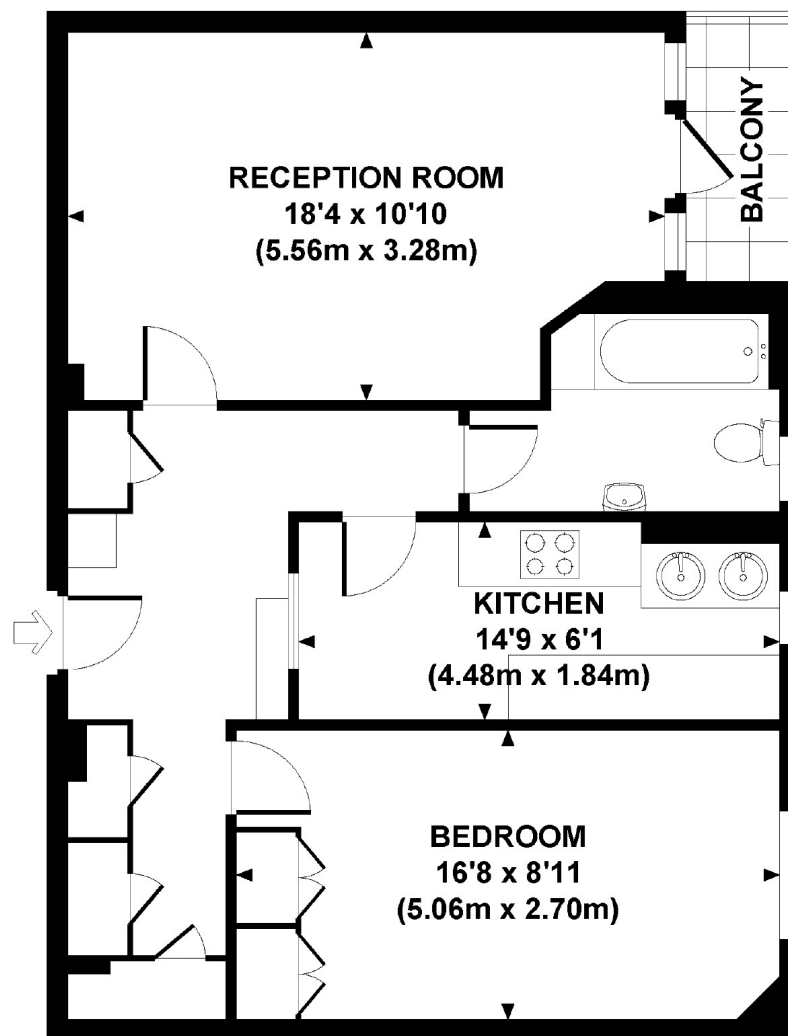
Features

- One Double Bedroom
- First Floor Apartment
- Modern Kitchen
- Communal Hot Water
- Resident Porter
- Communal Garden

Circus Road, London, NW8

CIRCUS LODGE, NW8

Approx. gross internal area
623 Sq Ft / 57.9 Sq M.
Representation of current layout.
Not to scale.



FIRST FLOOR

Contact

To arrange a viewing call our office on the number below or visit our website.



Energy Rating: E. We aim to make our particulars both accurate and reliable. However they are not guaranteed; nor do they form part of an offer or contract. If you require clarification on any points then please contact us, especially if you're traveling some distance to view. Please note that appliances and heating systems have not been tested and therefore no warranties can be given as to their good working order.