

Hall Road, NW8

£1,350,000

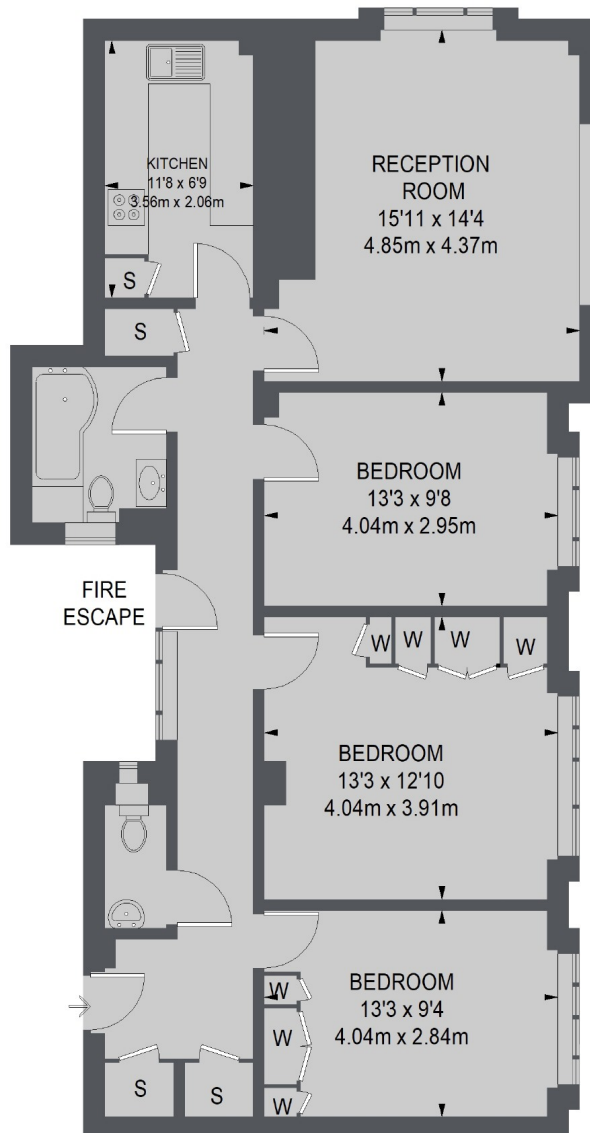
This bright and spacious three bedroom apartment set on the sixth floor of a portered building in St. John's Wood.

Grove Hall Court is located close to St Johns Wood High Street and underground station.

Features

Three Bedrooms
Large Reception
Sixth Floor
Lift
Portered Building
Great Views

Hall Road, London, NW8



SIXTH FLOOR

TOTAL APPROX. FLOOR AREA
998 SQ. FT. (92.70 SQ. M.)

Contact

To arrange a viewing call our office on the number below or visit our website.



Energy Rating: C. We aim to make our particulars both accurate and reliable. However they are not guaranteed; nor do they form part of an offer or contract. If you require clarification on any points then please contact us, especially if you're traveling some distance to view. Please note that appliances and heating systems have not been tested and therefore no warranties can be given as to their good working order.