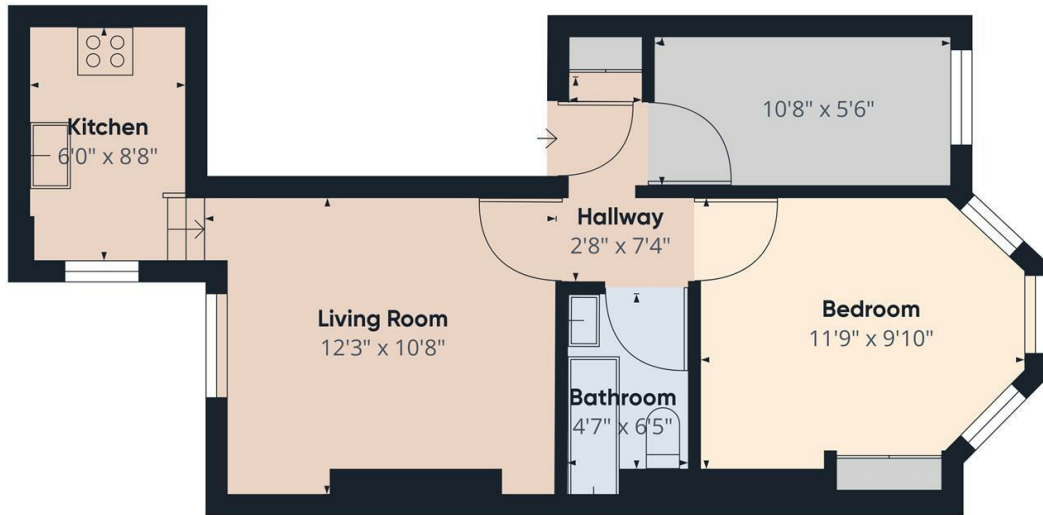


St Margarets Road
St Margarets
TW1 2LJ

£2,195 PCM

ChaseBuchanan





Approximate total area⁽¹⁾
412.63 ft²

(1) Excluding balconies and terraces

While every attempt has been made to ensure accuracy, all measurements are approximate, not to scale. This floor plan is for illustrative purposes only.

GIRAFFE360

- First floor flat
- Two bedrooms
- Cosy reception room
- Heart of St Margarets village
- Walking distance to Richmond
- EPC - C

This charming property located in the heart of St Margarets village offers a perfect blend of modern living and traditional charm.

As you step into the property, you are greeted by a cosy reception room, stepping down to the modern kitchen, with the layout ideal for entertaining guests.

This first-floor flat has a well appointed bathroom, two great bedrooms, including a spacious double bedroom and a comfortable single bedroom.

This property is in a great location, with everything the village has to offer on your doorstep, but also within walking distance to Richmond.

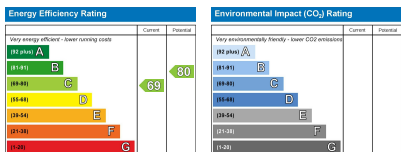
Chase Buchanan are bonded members of ARLA PropertyMark.

For more information or to book a viewing, please contact:

020 8744 2888

ChaseBuchanan

124 St Margarets Road, St Margarets, TW1 2AA



Care has been taken in the preparation of these particulars, however, their accuracy is not guaranteed and they do not form part of any contract. Measurements stated must be considered maximum.