



**Kilmorey Gardens  
St Margarets**

£1,150,000

**Chase**Buchanan

## Key Features

- Viewings accompanied by Chase Buchanan
- Four double bedrooms
- Terraced family house
- Good size garden
- Two bathrooms
- Scope to extend (STPP)
- Vacant possession
- Quiet residential road



## Description

Situated in a quiet residential road in St Margarets, this lovely four double bedroom family house is offered to market with further scope for extension (STPP).

The residence is offered to the market with vacant possession and the current accommodation comprises a lovely large receiving hallway, a front reception room, a further separate dining room with a wood burner opening to a kitchen area.

The upper floors benefit from four double bedrooms and two separate bathrooms.

Externally there is an attractive, landscaped garden perfect for relaxing or entertaining.

Kilmorey Gardens is a highly sought after road, situated within walking distance of St Margarets village and mainline station with its links into London Waterloo, as well as The River Thames and Ducks Walk.

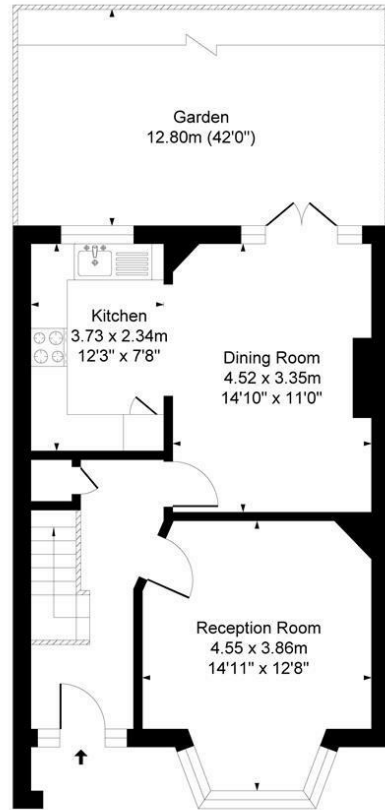
An appointment to view is highly recommended via the vendors' sole agent Chase Buchanan at the earliest opportunity.



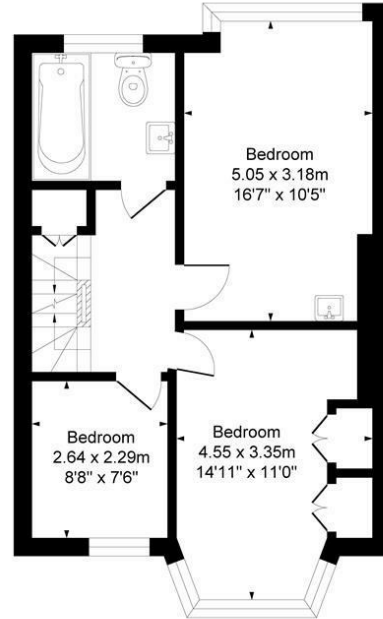


# Kilmorey Gardens TW1

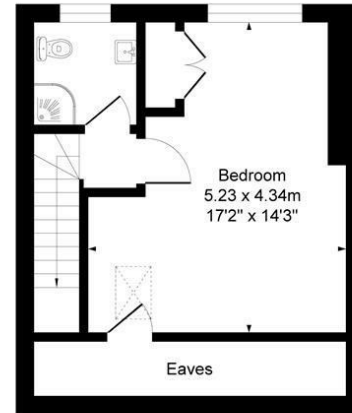
Approx. Gross Internal Floor Area  
126.8 Sq M - 1365 Sq Ft



Ground Floor  
Approximate Floor Area  
527.19 sq.ft  
(48.97 sq.m)



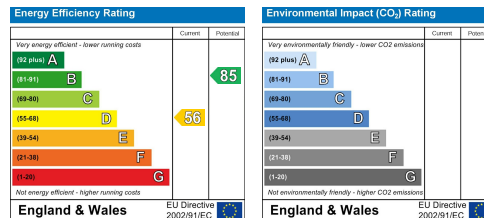
First Floor  
Approximate Floor Area  
541.87 sq.ft  
(50.34 sq.m)



Second Floor  
Approximate Floor Area  
296.12 sq.ft  
(27.51 sq.m)

Illustration for identification purposes only, measurements are approximate, not to scale.  
Produced By Esjay Property Marketing

Care has been taken in the preparation of these particulars, however, their accuracy is not guaranteed and they do not form part of any contract. Measurements stated must be considered maximum.



For more information or to book a viewing, please contact:

**020 8744 2434**

stmargarets@chasebuchanan.london

124 St Margarets Road, TW1 2AA

**ChaseBuchanan**