

Crown Road
St Margarets Village
TW1 3EJ

£775,000

ChaseBuchanan

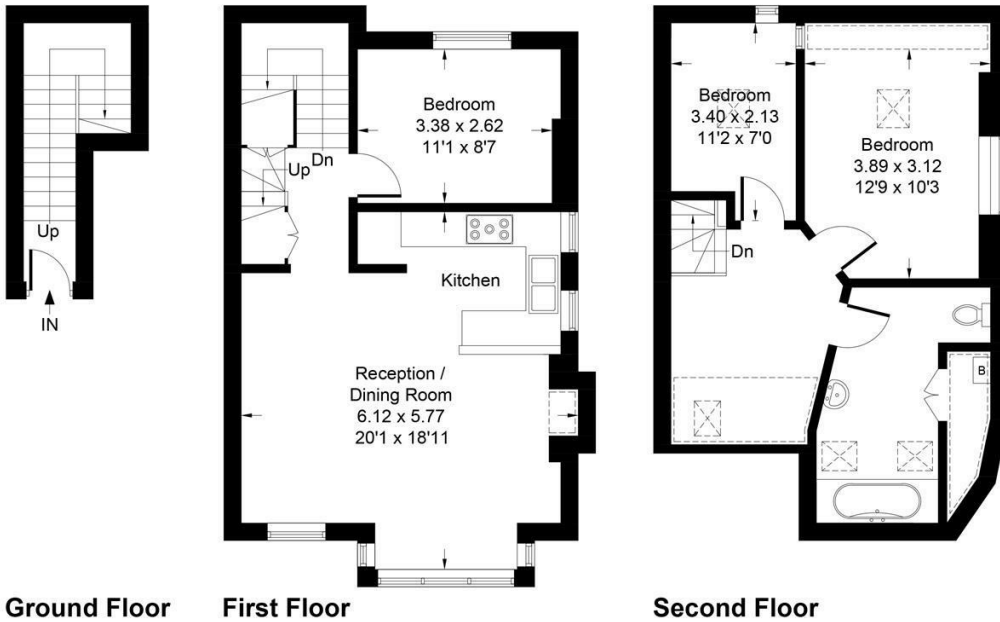


Crown Road, St Margarets, Twickenham, TW1

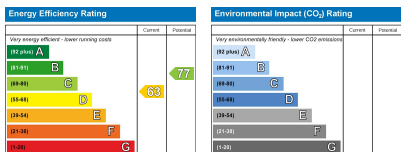
Approximate Gross Internal Area
97.2 sq m / 1046 sq ft



= Reduced headroom below 1.5m / 5'0



Floor plan produced in accordance with RICS Property Measurement Standards incorporating International Property Measurement Standards (IPMS2 Residential).
Illustration for identification purposes only, measurements are approximate, not to scale.
Produced for Chase Buchanan Group Limited by IDENTIKA LTD



Care has been taken in the preparation of these particulars, however, their accuracy is not guaranteed and they do not form part of any contract. Measurements stated must be considered maximum.

- Viewings accompanied by Chase Buchanan
- Victorian conversion apartment
- Close to Marble Hill Park.
- Vacant possession
- Three bedrooms
- Split level
- Period features
- EPC-D.

Welcome to this charming Victorian apartment located in the heart of St Margarets Village on Crown Road. This delightful property boasts three bedrooms, making it perfect for a growing family or those in need of extra space.

As you step inside, you'll be greeted by a spacious reception room with an open plan kitchen, ideal for entertaining guests or simply relaxing after a long day. The period features throughout the apartment add character and a touch of elegance to the space.

This split-level apartment offers a unique layout, providing a sense of privacy and separation between the living areas and the bedrooms. The property's Victorian age is reflected in its architecture, giving it a timeless appeal that is sure to impress.

Located in an excellent school catchment area, this apartment is perfect for families looking to provide their children with a top-notch education. With its convenient location and ample living space, this property offers a wonderful opportunity to create a comfortable and stylish home in a sought-after neighbourhood.

Don't miss out on the chance to make this Victorian gem your own - schedule a viewing today and experience the charm and character of this beautiful St Margarets Village apartment on Crown Road.

For more information or to book a viewing, please contact:

020 8744 2434

ChaseBuchanan

124 St Margarets Road, St Margarets, TW1 2AA