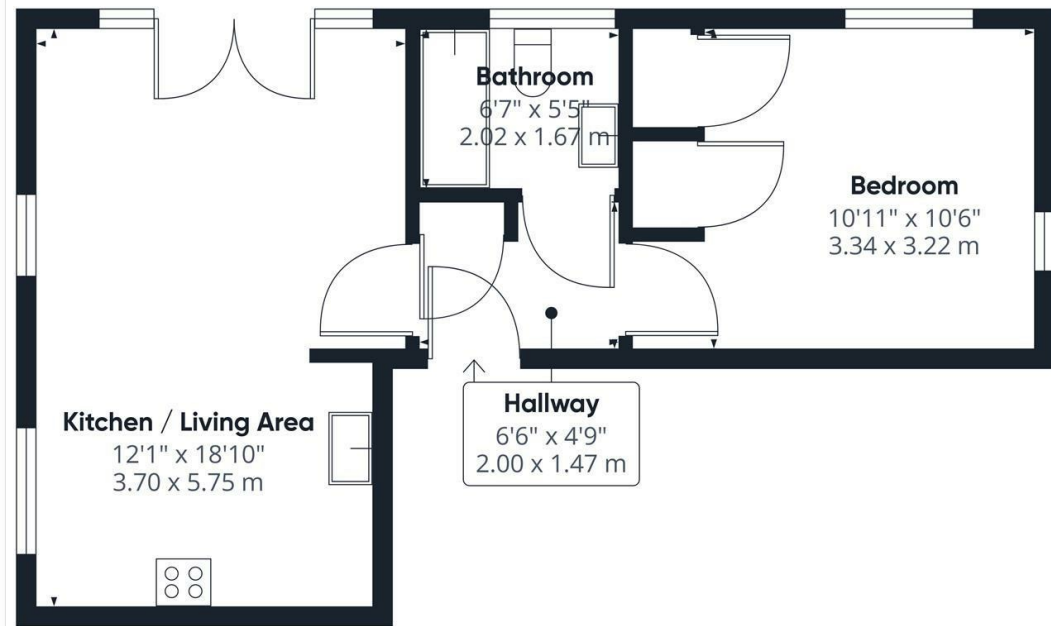


**Northcote Road
St Margarets
TW1 1NN**

£1,650 PCM

ChaseBuchanan





Approximate total area⁽¹⁾
434.43 ft²
40.36 m²

(1) Excluding balconies and terraces.

While every attempt has been made to ensure accuracy, all measurements are approximate, not to scale. This floor plan is for illustrative purposes only.
Calculations are based on RICS IPMS 3C standard.

GIRAFFE360

- Stunning one bedroom flat
- Private patio garden
- Bike Storage
- Ground floor
- Underfloor heating
- Walking distance to St Margarets
- Allocated parking space
- EPC - C

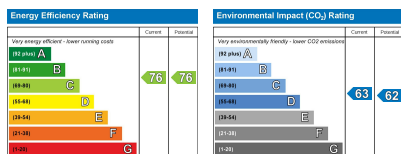
A fantastic one bedroom flat situated on the ground floor of an attractive building within walking distance of St Margarets village and train station. The property is presented in excellent decorative order and provides a spacious living /dining room with doors opening out to the patio, open plan to a beautifully finished Kitchen/ breakfast room. The bedroom is a good sized double, with a spacious bathroom with over bath shower and under floor heating throughout. With off street parking and outside space, this apartment is a real find. Chase Buchanan are bonded members of ARLA PropertyMark.

For more information or to book a viewing, please contact:

020 8744 2888

ChaseBuchanan

124 St Margarets Road, St Margarets, TW1 2AA



Care has been taken in the preparation of these particulars, however, their accuracy is not guaranteed and they do not form part of any contract. Measurements stated must be considered maximum.