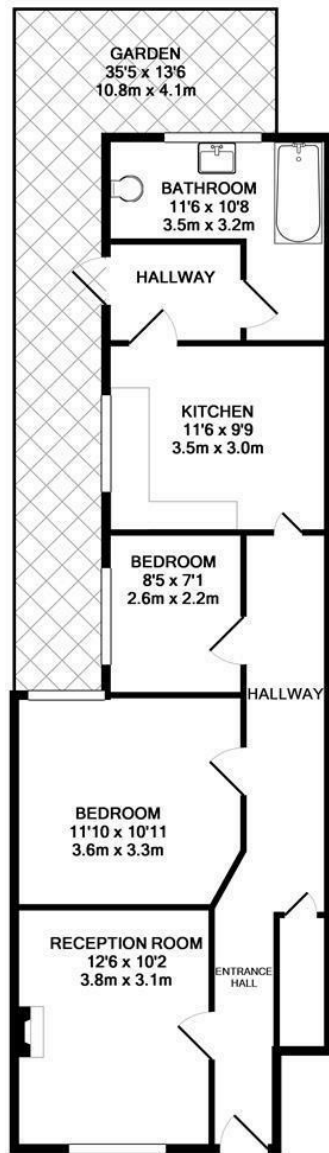


**Kenley Road
St Margarets
TW1 1JT**

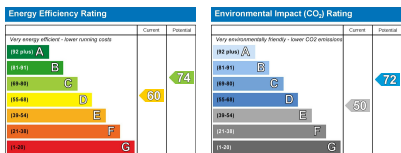
£2,250 PCM

ChaseBuchanan





TOTAL APPROX. FLOOR AREA 697 SQ.FT. (64.7 SQ.M.)
Made with Metropix ©2017



- Two bedrooms
- Kitchen/diner
- Period features
- Beautifully presented
- Private garden
- Close to St Margarets Station
- Close to Moor Mead park
- EPC - D

A charming two bedroom ground floor period maisonette presented in superb condition throughout and located on a popular road in St Margarets village, a stones throw from Moor Mead Park. The property boasts a functional layout comprising a front reception room with feature fireplace, two bedrooms, separate kitchen/breakfast room, large luxury bathroom, and a stunning landscaped private rear garden. The property has been re-furbished in recent years and benefits from a stunning condition throughout. Kenley Road is a much sought after, quiet residential road within very close proximity to the local shops, restaurants, transport links, River Thames and the open green spaces of both Moor Mead and Marble Hill Park.

Chase Buchanan are bonded members of ARLA PropertyMark.

For more information or to book a viewing, please contact:

020 8744 2888

ChaseBuchanan

124 St Margarets Road, St Margarets, TW1 2AA