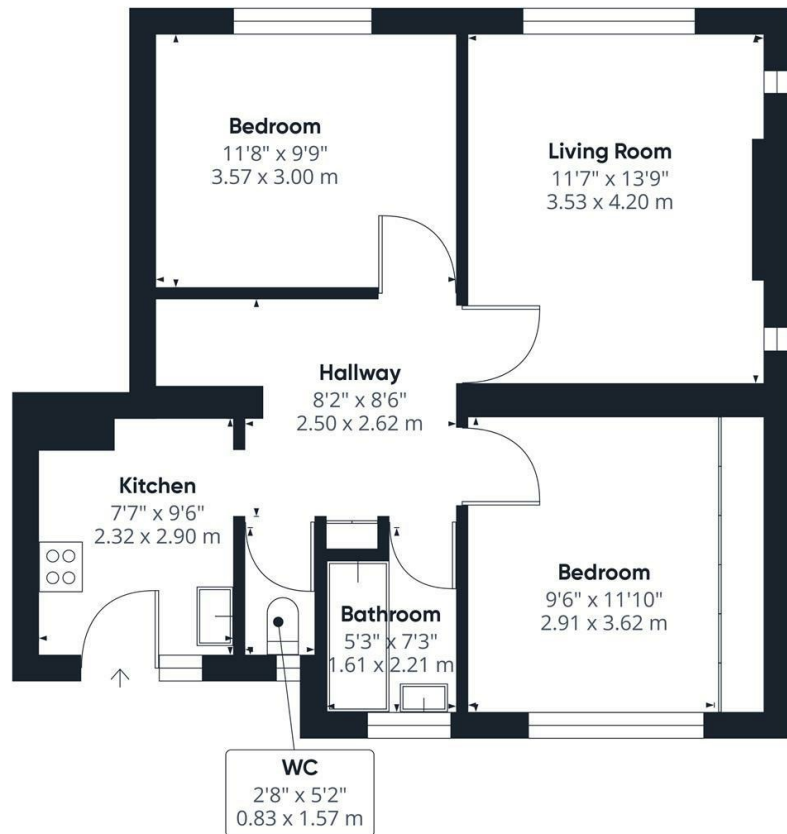


**Chertsey Road  
St Margarets  
TW1 1JD**

£2,195 PCM

**ChaseBuchanan**





Approximate total area<sup>(1)</sup>  
615.16 ft<sup>2</sup>  
57.15 m<sup>2</sup>

(1) Excluding balconies and terraces

While every attempt has been made to ensure accuracy, all measurements are approximate, not to scale. This floor plan is for illustrative purposes only.

GIRAFFE360

- First floor flat
- Spacious reception room
- Beautifully decorated
- Convenient location
- Two double bedrooms
- Wooden floors throughout
- Small rear balcony
- EPC - C

This charming first-floor flat located in the desirable area of St Margarets boasts a spacious reception room, two great sized double bedrooms with fitted wardrobes, and a modern bathroom, with wooden floors throughout, making it an ideal home for a small family or professionals.

One of the highlights of this flat is the small rear balcony leading out from the gorgeous kitchen, perfect for enjoying a morning cup of tea or unwinding after a long day. The property's beautiful decoration adds a touch of elegance and warmth to the living space, creating a welcoming atmosphere.

Situated between St Margarets and Twickenham, this flat offers the best of both worlds with easy access to a variety of shops, restaurants, and green spaces. this location has something for everyone.

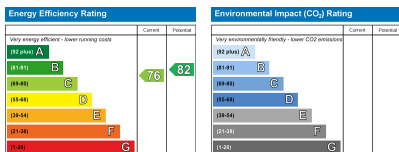
Chase Buchanan are bonded members of ARLA PropertyMark.

For more information or to book a viewing, please contact:

020 8744 2888

**Chase**Buchanan

124 St Margarets Road, St Margarets, TW1 2AA



Care has been taken in the preparation of these particulars, however, their accuracy is not guaranteed and they do not form part of any contract. Measurements stated must be considered maximum.