

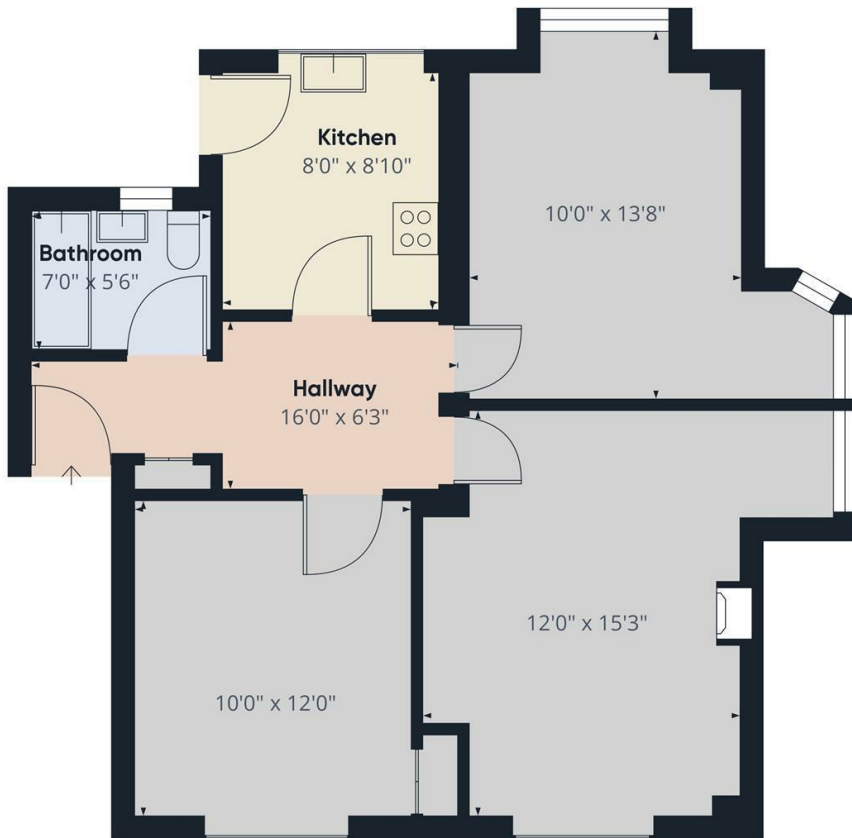
**Kelvin Drive
St Margarets
TW1 2AH**

£2,250 PCM

ChaseBuchanan



- Two double bedrooms
- Top floor flat
- Wooden floors throughout
- Gorgeous kitchen and bathroom
- Heart of St Margarets village
- EPC - D



Approximate total area⁽¹⁾
684.37 ft²

(1) Excluding balconies and terraces

While every attempt has been made to ensure accuracy, all measurements are approximate, not to scale. This floor plan is for illustrative purposes only.

GIRAFFE360

This charming top floor flat is located in the heart of St Margarets village. This delightful property boasts a quiet and peaceful location, perfect for professional couples.

The spacious reception room is ideal for relaxing or entertaining guests, with dining space. The flat features two generously sized double bedrooms, with one boasting built in wardrobes, and offering ample space for a small family, couples, or individuals looking for a spare room or home office.

One of the highlights of this property are the wooden floors throughout adding a touch of elegance, perfect for modern living.

Located in the heart of St Margarets village, residents can enjoy the convenience of local amenities, charming cafes, and beautiful green spaces nearby. Whether you are looking for a peaceful retreat or a vibrant community to be a part of, this flat offers the best of both worlds.

Don't miss the opportunity to make this gorgeous flat your new home in St Margarets village.

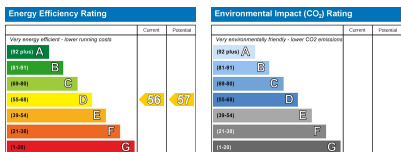
Chase Buchanan are bonded members of ARLA Propertymark.

For more information or to book a viewing, please contact:

020 8744 2888

ChaseBuchanan

124 St Margarets Road, St Margarets, TW1 2AA



Care has been taken in the preparation of these particulars, however, their accuracy is not guaranteed and they do not form part of any contract. Measurements stated must be considered maximum.