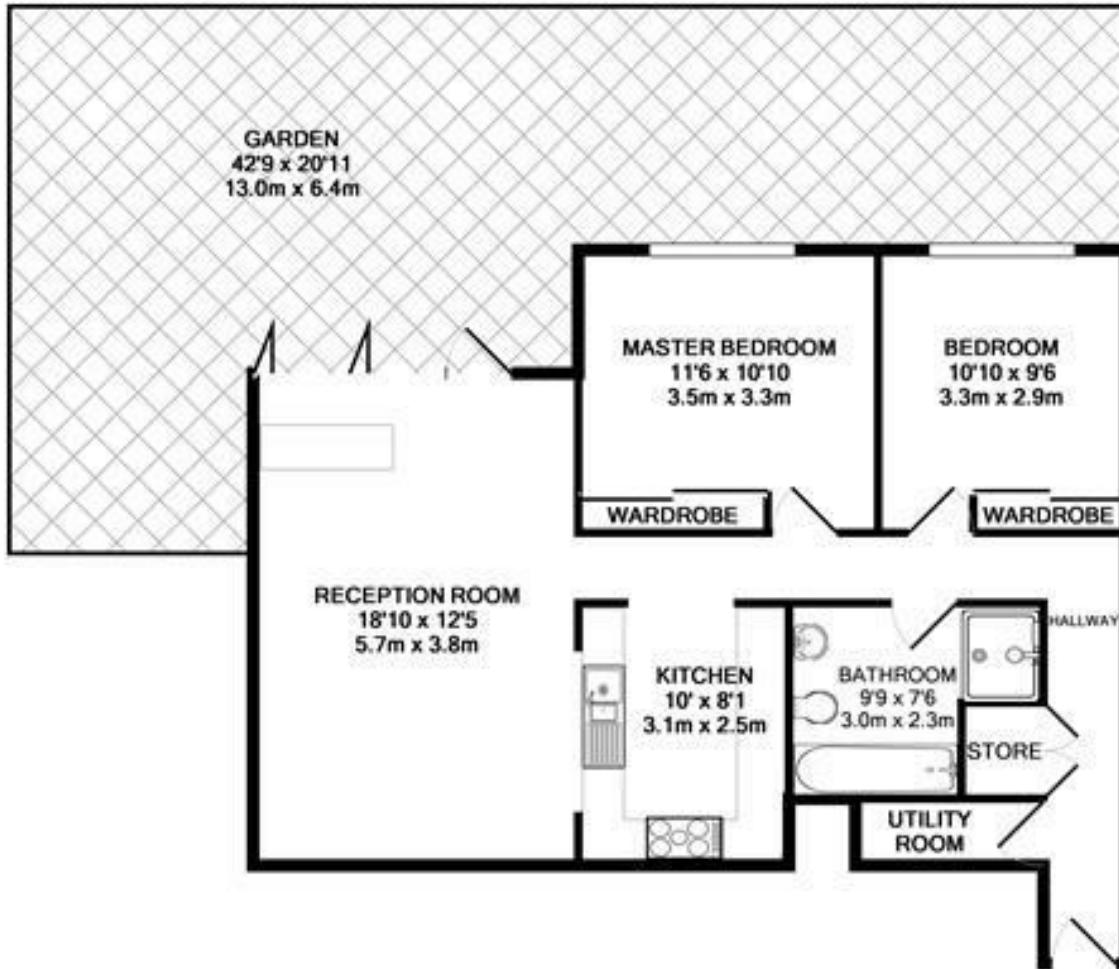


**Cambridge Park
East Twickenham
TW1 2JF**

£1,995 PCM

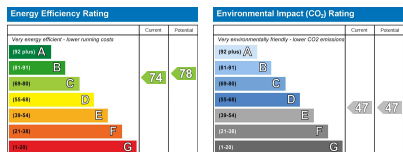
ChaseBuchanan





TOTAL APPROX. FLOOR AREA 735 SQ.FT. (68.2 SQ.M.)

Produced solely for Chase Buchanan
Made with Metropix ©2019



- Two double bedrooms
- Wooden floors throughout
- Private rear garden
- Un-allocated parking
- Ground floor apartment
- Modern kitchen & bathroom
- Fantastic location
- EPC - C

A spacious two double bedroom ground floor apartment in Cambridge Park. Situated on the edge of Marble Hill Park and only moments from Richmond Bridge, this property offers peaceful and serene surroundings. You really can't put a price on this location. Only a short walk away from the property you have access to Richmond and St Margarets stations, making this property ideal for a professional couple that are looking for a quick commute, or a small family. This space is perfect for entertaining friends and family, with the kitchen overlooking the bright reception room leading out to the private rear garden via bi-folding doors. You will also find two double bedrooms both with built in wardrobes, a bathroom with a separate shower unit and a utility room. Also benefitting from double glazed windows, wooden floor throughout and un-allocated off street parking.

Chase Buchanan are bonded members of ARLA PropertyMark.

For more information or to book a viewing, please contact:

020 8744 2888

ChaseBuchanan

124 St Margarets Road, St Margarets, TW1 2AA