

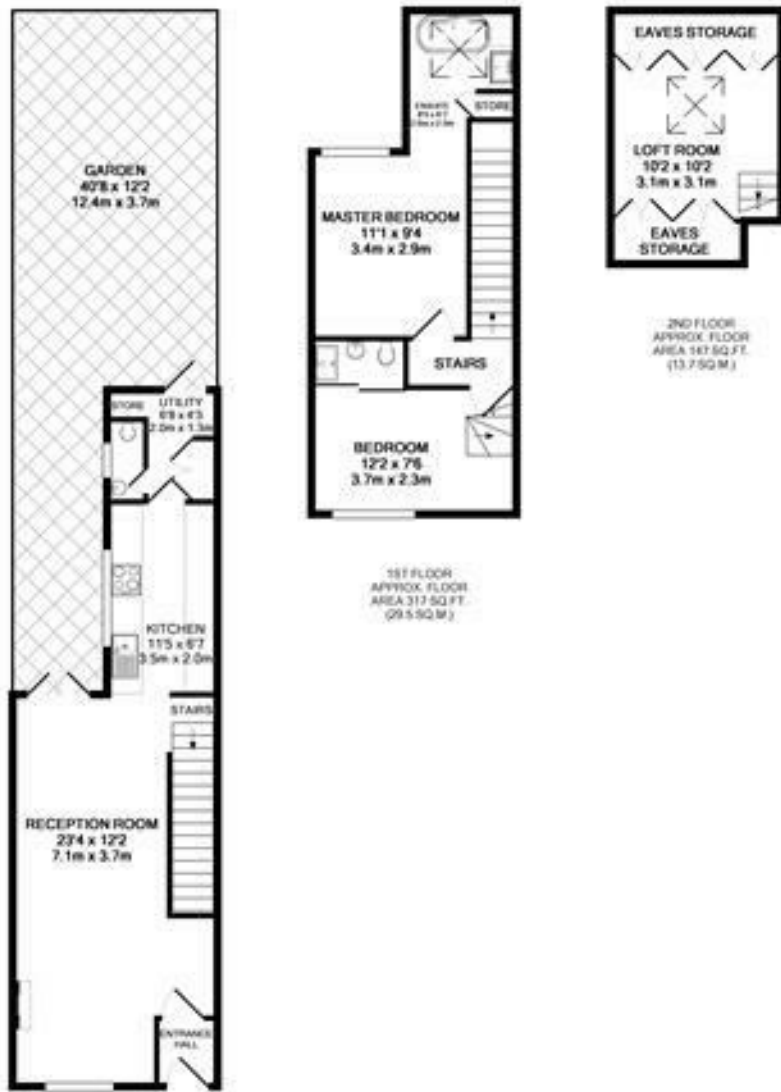
**St. Margarets Grove  
St Margarets  
TW1 1JG**

£2,150 PCM

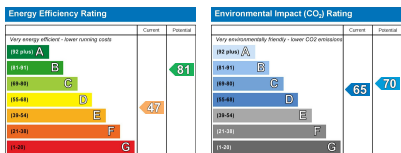
**ChaseBuchanan**







TOTAL APPROX. FLOOR AREA 867 SQ.FT. (80.5 SQ.M.)  
 Produced solely for Chase Buchanan  
 Made with Metropix ©2019



- Two bedroom cottage
- Charm and character
- Pretty private garden
- Loft room
- Large open reception room
- Heart of St Margarets village
- Close to Moor Mead park
- EPC - E

This beautiful and unique two bedroom cottage in the heart of St Margarets village boasts a large open plan reception/dining room with log burner and patio doors to the gorgeous and tranquil garden where you can relax. With a beautiful country style kitchen, downstairs cloakroom, two double bedrooms, one with an en-suite bathroom and roll top bath, the other with an en-suite shower room, this property really does stand out from the crowd. There is also an additional room in the converted loft which works perfectly as a home office. This charming property has bags of character throughout.

Chase Buchanan are bonded members of ARLA PropertyMark.

For more information or to book a viewing, please contact:

020 8744 2888

**ChaseBuchanan**

124 St Margarets Road, St Margarets, TW1 2AA