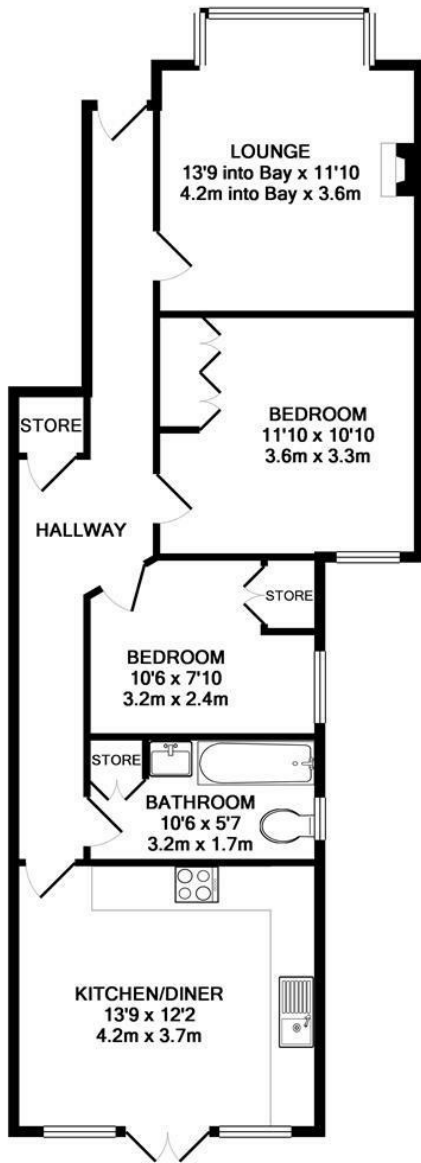


**Moor Mead Road
St Margarets
TW1 1JS**

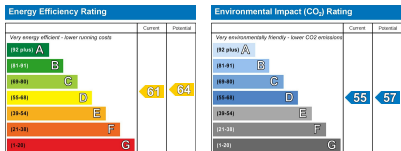
£2,250 PCM

ChaseBuchanan





TOTAL APPROX. FLOOR AREA 719 SQ.FT. (66.8 SQ.M.)
Made with Metropix ©2015



- Two bedroom maisonette
- Wooden floors
- Neutral decor throughout
- Overlooking Moor Mead Park
- Private garden
- EPC - D

A gorgeous, two double bedroom, ground floor Edwardian maisonette overlooking Moor Mead Park, and just a short walk to the village or to Twickenham station. Presented in excellent decorative order throughout with a beautiful sitting room boasting views of the park and a stunning period fireplace. With an eat-in kitchen, this offers the perfect opportunity to catch up over dinner, also ideal for families and entertaining. Having double doors leading onto a beautiful private garden really making this property top of the list.

Chase Buchanan are bonded members of ARLA Propertymark.

For more information or to book a viewing, please contact:

020 8744 2888

ChaseBuchanan

124 St Margarets Road, St Margarets, TW1 2AA