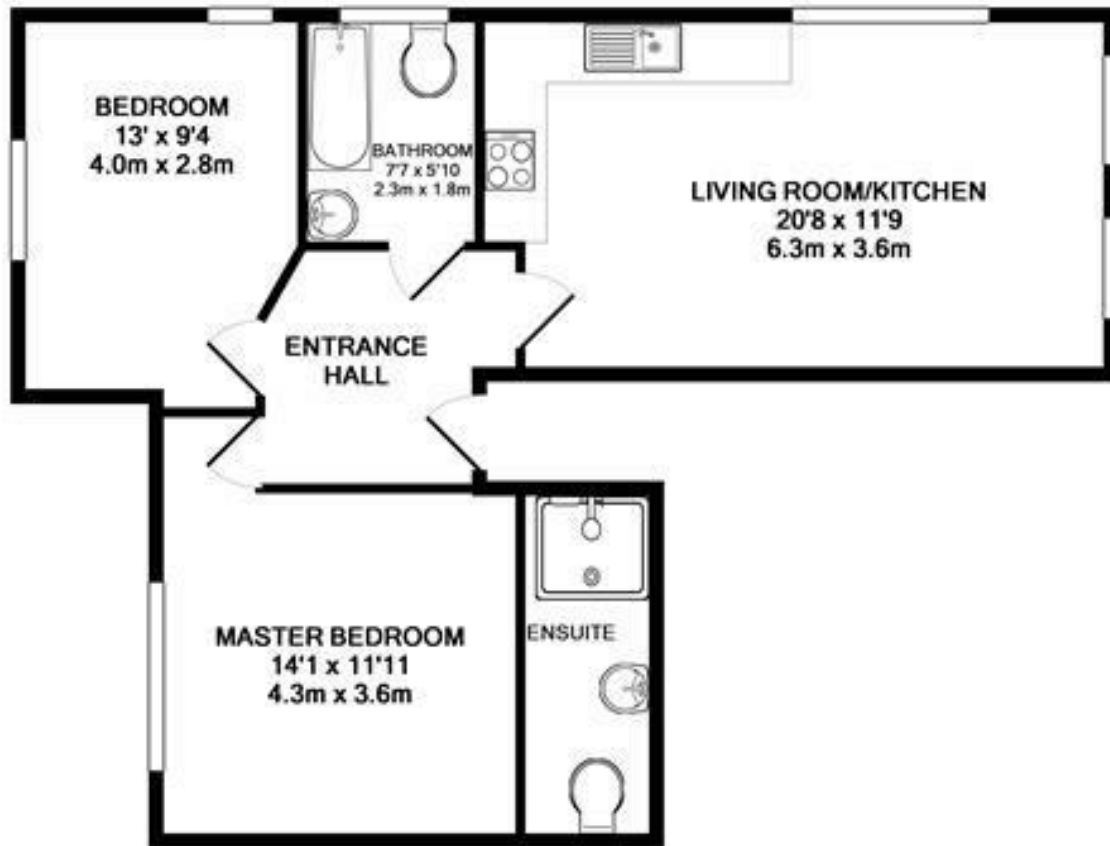


**Cambridge Park
East Twickenham
TW1 2JU**

£2,300 PCM

ChaseBuchanan





TOTAL APPROX. FLOOR AREA 654 SQ.FT. (60.8 SQ.M.)
 Made with Metropix ©2017

- Raised ground floor conversion
- Off street parking
- Close to the River Thames
- Two bathrooms
- Open plan living
- EPC - C

Nestled away in the beautiful Cambridge Park, this fully converted period property presents in an excellent standard throughout. With a stunning open plan kitchen/living room, including fully integrated appliances, perfect for entertaining. There is a family bathroom with over bath shower, two double bedrooms and an en-suite shower room. This grand building, with this apartment situated on the raised ground floor, has the added benefit of off street parking and is situated in a perfect location. It is a short walk from the River Thames and Richmond town centre.

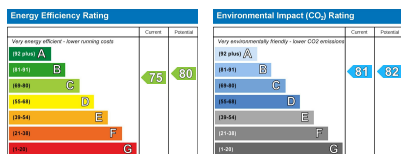
Chase Buchanan are bonded members of ARLA Propertymark.

For more information or to book a viewing, please contact:

020 8744 2888

ChaseBuchanan

124 St Margarets Road, St Margarets, TW1 2AA



Care has been taken in the preparation of these particulars, however, their accuracy is not guaranteed and they do not form part of any contract. Measurements stated must be considered maximum.