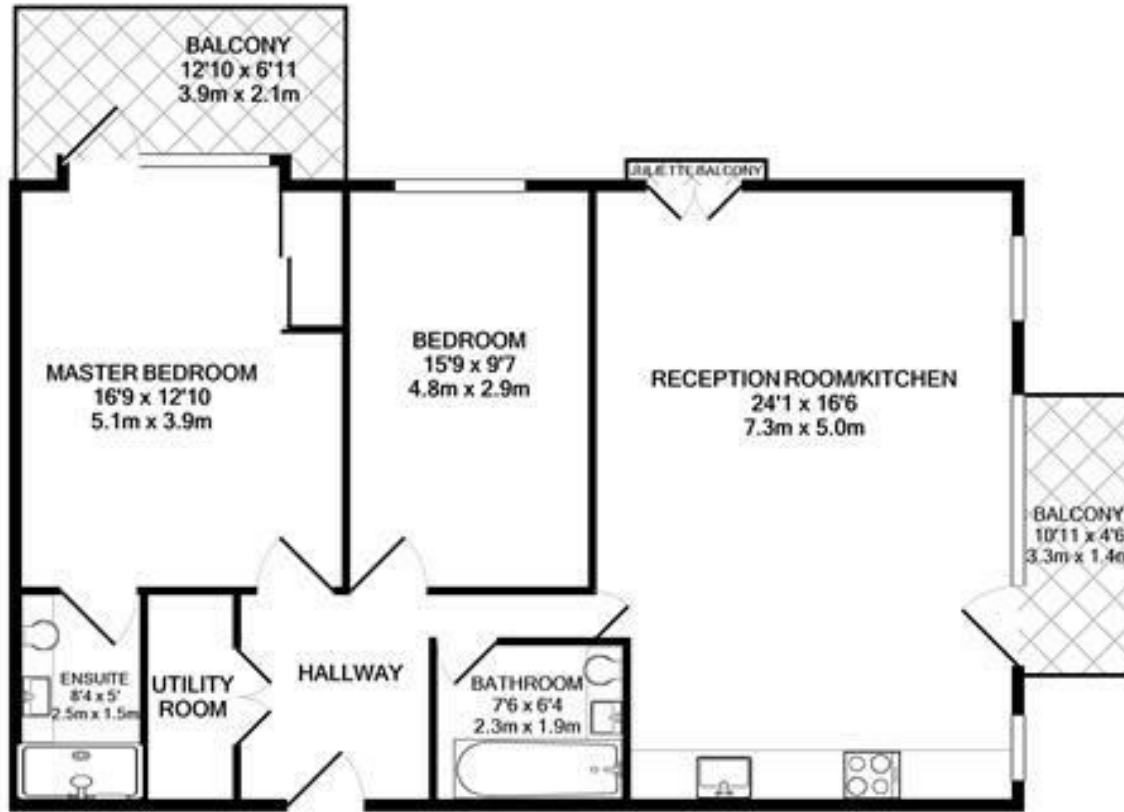


**Swan Street  
Old Isleworth  
TW7 6YA**

£2,500 PCM

**ChaseBuchanan**





TOTAL APPROX. FLOOR AREA 945 SQ.FT. (87.8 SQ.M.)

Produced solely for Chase Buchanan  
Made with Metropix ©2019

- Luxury riverside development
- Direct river facing views
- Close to local shops and coffee shops
- Allocated parking space
- Large open plan kitchen/reception with balcony
- Two bedrooms, two bathrooms
- Easy access to Richmond shops
- EPC - B

Lion Wharf is a riverside development of luxury homes in Old Isleworth in a picturesque setting of landscaped gardens and courtyards. This is a two bedroom, two bathroom apartment that features a large, dual aspect, open-plan kitchen, living and dining area with a balcony directly facing the River Thames. Soft-close units are a feature in the beautifully equipped and fully integrated kitchen.

The master bedroom also benefits from a balcony, fitted wardrobes and an en-suite bathroom, and the second bedroom is a large double. This beautiful apartment also has under floor heating and the added benefit of an allocated parking space.

Lion Wharf is just a short walk from the retail hub of South Street where specialist shops and small stores can be found alongside a variety of bars, cafés and restaurants. St Margarets mainline station is a short walk away, and Richmond is also easily accessible.

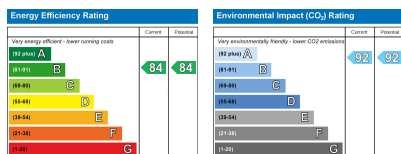
Chase Buchanan are bonded members of ARLA PropertyMark.

For more information or to book a viewing, please contact:

020 8744 2888

**ChaseBuchanan**

124 St Margarets Road, St Margarets, TW1 2AA



Care has been taken in the preparation of these particulars, however, their accuracy is not guaranteed and they do not form part of any contract. Measurements stated must be considered maximum.