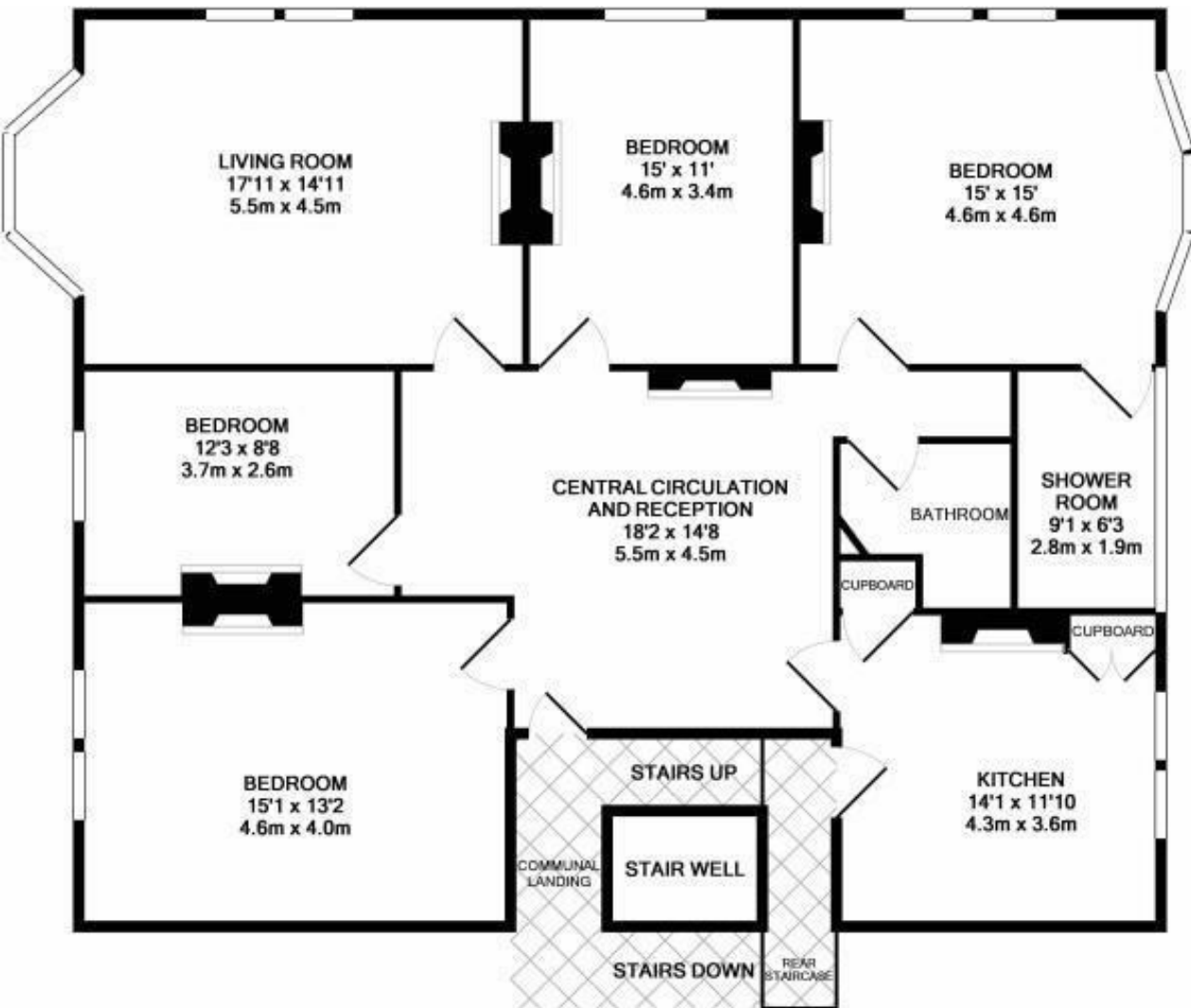


**North Court  
East Twickenham  
TW1 2HS**

£4,500 PCM

**ChaseBuchanan**

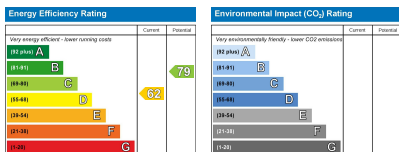




TOTAL APPROX. FLOOR AREA 1668 SQ.FT. (155.0 SQ.M.)

Whilst every attempt has been made to ensure the accuracy of the floor plan contained here, measurements of doors, windows, rooms and any other items are approximate and no responsibility is taken for any error, omission, or mis-statement. This plan is for illustrative purposes only and should be used as such by any prospective purchaser. The services, systems and appliances shown have not been tested and no guarantee as to their operability or efficiency can be given.

Made with Metropix ©2017



- Mansion apartment
- Four bedrooms
- Retained period features
- Excellent location
- First floor
- Two bathrooms
- Extremely spacious throughout
- EPC - D

Located moments from the banks of the River Thames is this elegantly proportioned first floor period apartment set within an imposing period mansion block, only a stone's throw from Richmond Bridge and Richmond town centre with its enviable selection of shops, bars and restaurants. It is also extremely convenient for access to the A316 for central London and in an ideal catchment area for local schools. This spacious property retains many period features, very spacious rooms and tall ceilings with four bedrooms - three double bedrooms and a fourth single bedroom/study. The property further boasts a bright and spacious reception room, separate dining hall, with original stone flooring, fantastic contemporary kitchen, family bathroom and further en-suite shower room. Further benefitting from wood block flooring throughout and an allocated parking space for one car.

Chase Buchanan are bonded members of ARLA PropertyMark.

For more information or to book a viewing, please contact:

020 8744 2888

**ChaseBuchanan**

124 St Margarets Road, St Margarets, TW1 2AA

Care has been taken in the preparation of these particulars, however, their accuracy is not guaranteed and they do not form part of any contract. Measurements stated must be considered maximum.