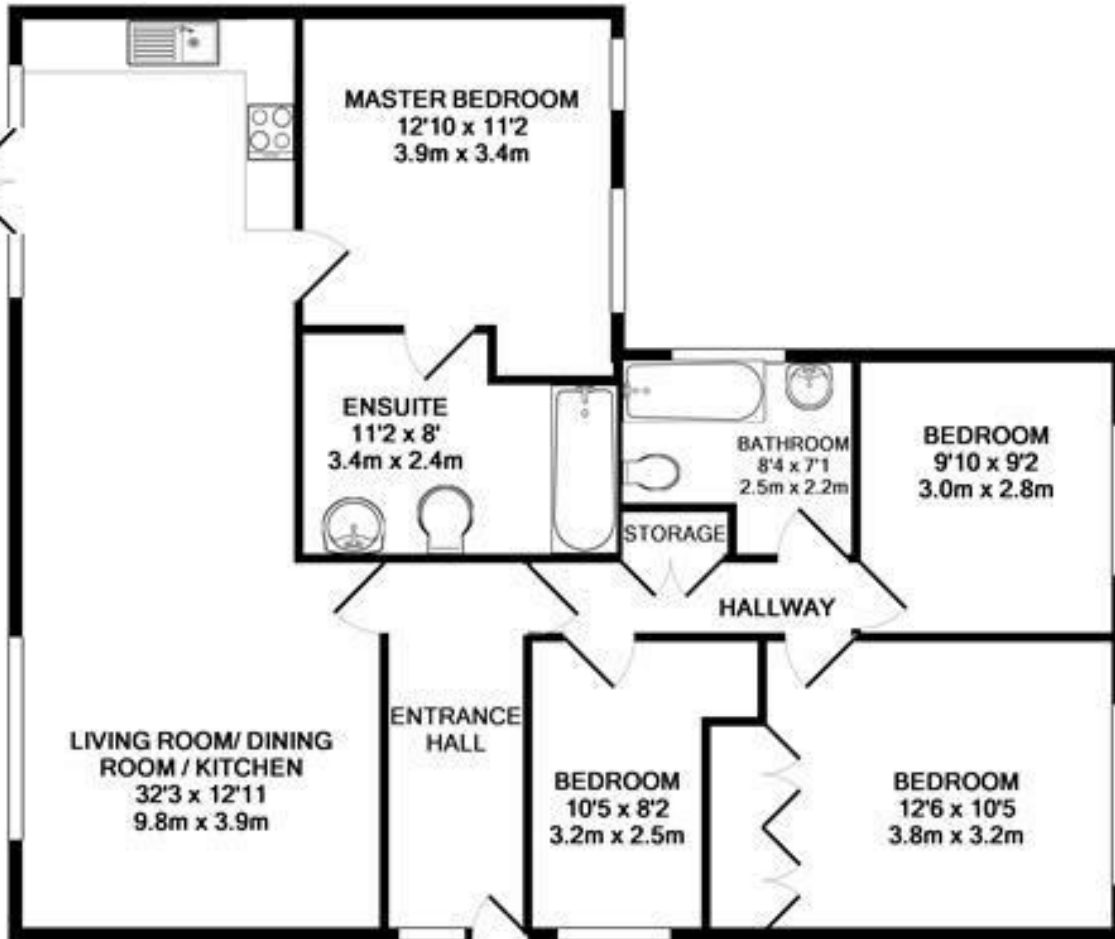


**Norfolk Close  
St Margarets  
TW1 1RT**

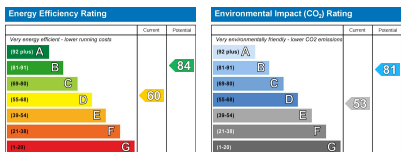
£2,650 PCM

**ChaseBuchanan**





TOTAL APPROX. FLOOR AREA 1034 SQ.FT. (96.1 SQ.M.)  
 Made with Metropix ©2017



- Detached Bungalow
- Beautiful large surrounding garden
- Garage
- Four bedrooms
- Two modern bathrooms
- EPC - D

A rarely available, detached four bedroom bungalow is truly unique with excellent transport links and St Margarets Village right on your doorstep. With a beautifully large surrounding garden, this completely detached property really is your very own private haven. With three of the four bedrooms being double and the two generously sized bathrooms, this property offers plenty of choice for the family. The large open plan kitchen allows you to keep an eye on the little ones as well as being perfect for those evenings when you are entertaining friends and family. With the addition of a garage as well as an off street parking space, this property really does tick all the boxes.

Chase Buchanan are bonded members of ARLA Propertymark.

For more information or to book a viewing, please contact:

020 8744 2888

**ChaseBuchanan**

124 St Margarets Road, St Margarets, TW1 2AA