



**Worple Road
Old Isleworth**
£699,950
ChaseBuchanan

Key Features

- Viewings accompanied by Chase Buchanan
- Three bedrooms
- Victorian house
- Private rear garden
- Significant scope for extension (STP)
- Period features



Description

Nestled in the charming Worple Road of Old Isleworth, this Victorian house offers a delightful blend of character and potential. Boasting two reception rooms, three cosy bedrooms, and a bathroom, this property is perfect for those seeking a quintessentially British home.

Situated close to the picturesque River Thames, this house provides not only a tranquil setting but also easy access to riverside walks and scenic views. The property's age adds to its allure, with Victorian features that exude charm and elegance.

With lots of potential waiting to be unlocked, this house offers a unique opportunity to create a dream home tailored to your tastes. Whether you're looking to embrace the history of the Victorian era or modernise with a contemporary touch, this property is a canvas ready for your personal touch.

Don't miss out on the chance to own a piece of history in this sought-after location. Embrace the warmth and character of this Victorian house and envision the endless possibilities it holds for you and your family.

An appointment to view is highly recommended via the vendors sole agents Chase Buchanan.





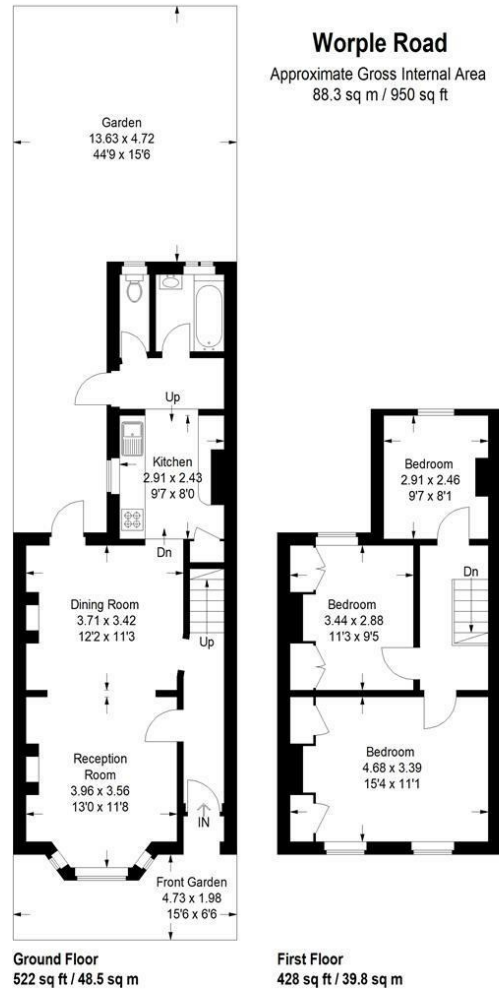
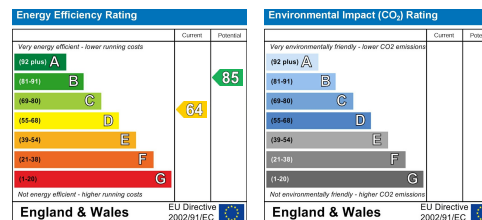


Illustration for identification purposes only, measurements are approximate, not to scale. floorplansUsketch.com © (ID1087424)

Care has been taken in the preparation of these particulars, however, their accuracy is not guaranteed and they do not form part of any contract. Measurements stated must be considered maximum.



For more information or to book a viewing, please contact:

020 8744 2434

stmargarets@chasebuchanan.london

124 St Margarets Road, TW1 2AA

ChaseBuchanan