

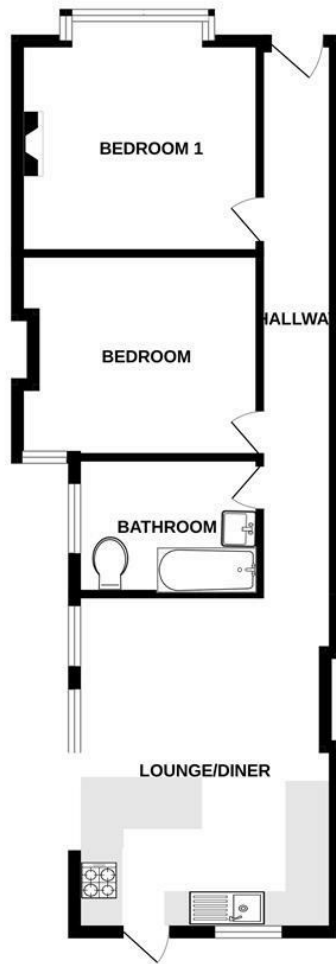
**Sidney Road  
St Margarets  
TW1 1JR**

£2,350 PCM

**ChaseBuchanan**



GROUND FLOOR  
710 sq.ft. (66.0 sq.m.) approx.



TOTAL FLOOR AREA: 710 sq.ft. (66.0 sq.m.) approx.  
Produced solely for Chase Buchanan  
Made with Metropix ©2023

- Two double bedrooms
- Heart of the village
- Private garden
- Ground floor maisonette
- Many period features
- EPC - D

A delightful two bedroom ground floor maisonette located in the popular Moor Mead area of St Margarets and within a short walk of St Margarets station, and village. The property comprises two double bedrooms, open plan reception room to the kitchen. with a rear door leading out to the private rear garden, and a large bathroom with over bath shower.

This is a fantastic example of these beautiful period maisonettes, with plenty of storage and period features, on a very sought after road in St Margarets village.

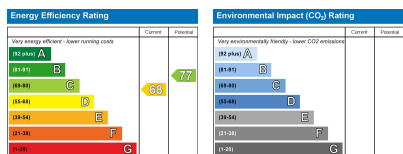
Chase Buchanan are bonded members of ARLA PropertyMark.

For more information or to book a viewing, please contact:

020 8744 2888

**Chase Buchanan**

124 St Margarets Road, St Margarets, TW1 2AA



Care has been taken in the preparation of these particulars, however, their accuracy is not guaranteed and they do not form part of any contract. Measurements stated must be considered maximum.