



COURT

P  
Resident  
parking  
only  
Mon-Fri  
8.30-6.00pm

**Arlington Road  
East Twickenham**  
£475,000  
**ChaseBuchanan**

## Key Features

- Viewings accompanied by Chase Buchanan
- A Spacious & Light Rear Aspect Living Room with Balcony
- Kitchen
- Two Bedrooms
- Recently Modernised Bathroom
- Newly Installed Double Glazing
- Gas Central Heating
- Garage in Block
- Long Lease
- Highly Recommended

## Description

An opportunity to acquire this spacious and well-presented two-bedroom apartment with balcony & garage, situated in a sought-after tree lined road and within minutes of St Margarets Village and walking distance to Richmond town.

The property's accommodation comprises of a large and bright rear aspect reception room with newly installed double-glazed doors to the balcony, door to kitchen, two bedrooms, and a separate recently modernised bathroom. The property also benefits from a long lease and a modern combination boiler, with the added benefit of a large communal garden, parking spaces, and a garage in block.

An appointment to view is highly recommended via the vendors' sole agent Chase Buchanan at the earliest opportunity.





# Howmic Court

Approx. Gross Internal Floor Area  
67.5 Sq M - 727 Sq Ft

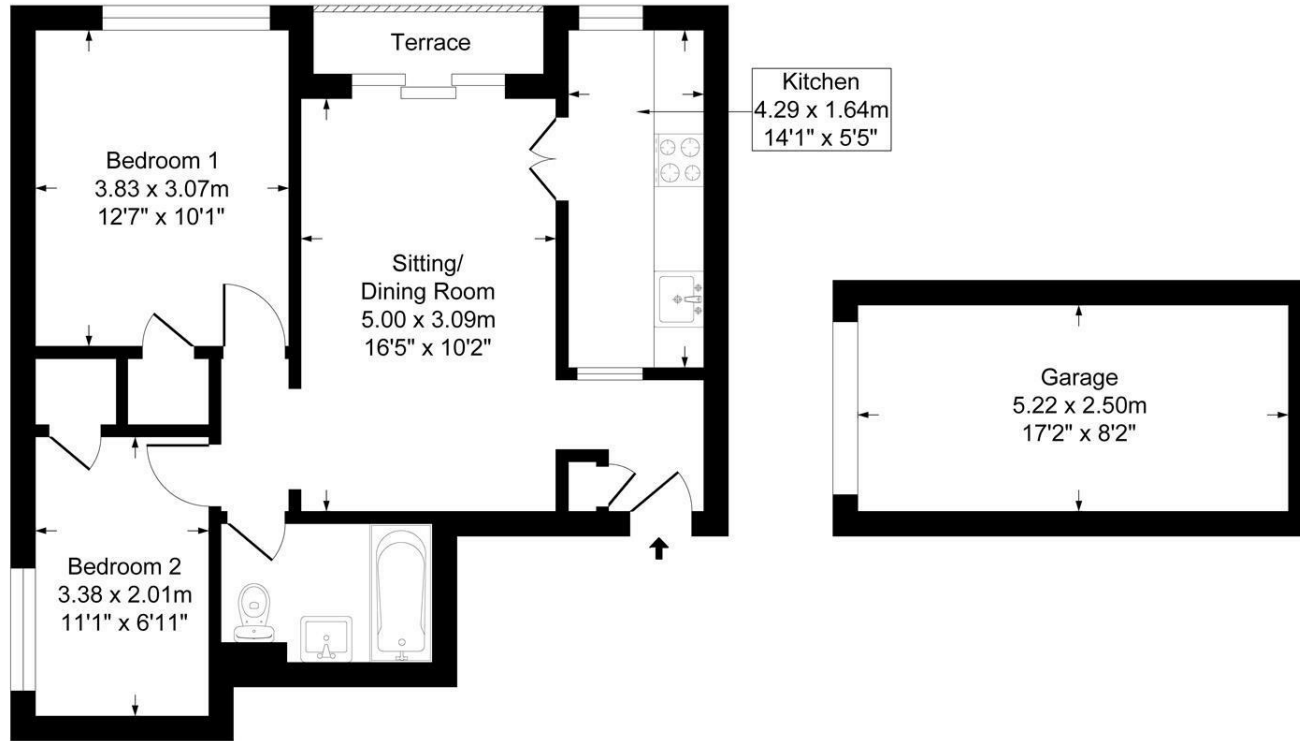


Illustration for identification purposes only, measurements are approximate, not to scale.

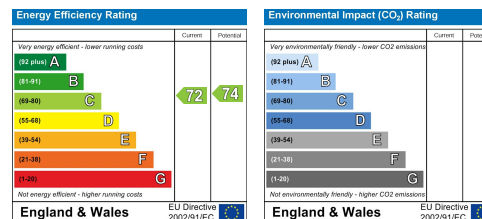
For more information or to book a viewing, please contact:

**020 8744 2434**

stmargarets@chasebuchanan.london

124 St Margarets Road, TW1 2AA

Care has been taken in the preparation of these particulars, however, their accuracy is not guaranteed and they do not form part of any contract. Measurements stated must be considered maximum.



**ChaseBuchanan**