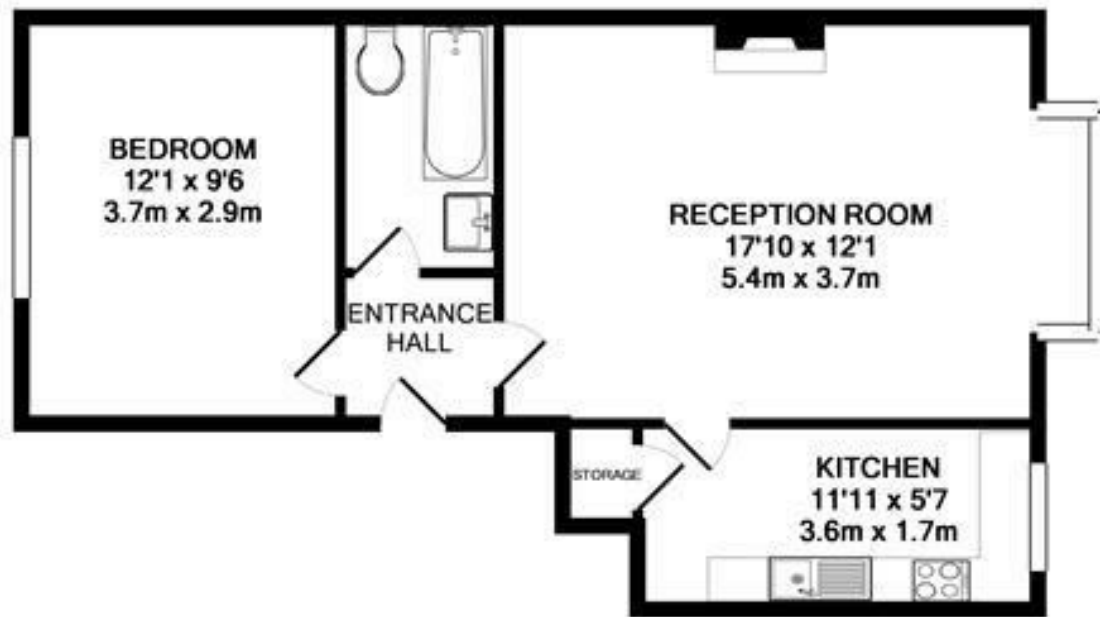


St. Margarets Road  
St Margarets  
TW1 2LL

£1,550 PCM

ChaseBuchanan





TOTAL APPROX. FLOOR AREA 452 SQ.FT. (42.0 SQ.M.)  
 Made with Metropix ©2017

- One double bedroom flat
- Delightful first floor period conversion
- Close proximity to Richmond Town Centre
- Wooden floors throughout
- Excellent location in the heart of St Margarets
- EPC - C

A delightful one bedroom first floor flat situated in St Margarets village and within close proximity to Richmond Bridge. This conversion flat has a beautiful reception room with enough space for dining, a double bedroom to the rear and a modern kitchen and bathroom. With tall ceilings and retained period features throughout, this stunning property is ticking all the boxes.

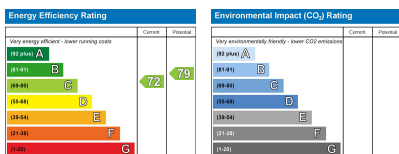
Chase Buchanan are bonded members of ARLA propertymark.

For more information or to book a viewing, please contact:

020 8744 2888

**ChaseBuchanan**

124 St Margarets Road, St Margarets, TW1 2AA



Care has been taken in the preparation of these particulars, however, their accuracy is not guaranteed and they do not form part of any contract. Measurements stated must be considered maximum.