



**5 Riverdale Road  
East Twickenham**

£995,000

**ChaseBuchanan**



## Key Features

- Viewings accompanied by Chase Buchanan
- Two double bedrooms
- House
- Private walled garden
- Two bathrooms
- Balcony
- Excellent condition throughout
- Premier residential road
- Close to River Thames

## Description

This striking 1950's architect designed Lodge house sits tucked away on one of Richmond borough's finest roads, just a short walk to Richmond Bridge and Richmond Centre with its shops and transport. St Margarets is also close by with its numerous coffee houses and boutiques.

Set within the large communal grounds of one of the five Gothic mansions that line this very special road, the unique property has been renovated to a beautiful standard.

There are solid walnut floors throughout and a modern kitchen with fully integrated Neff appliances. The first floor provides two large double bedrooms and two bathrooms, with one bedroom featuring a walk-in wardrobe and en-suite wet room. The other bedroom has a large west facing balcony overlooking the beautiful gardens.

There is a private walled garden to the front as well as full and direct access to the vast communal grounds.

This peaceful house has windows on all sides and a large skylight window which floods the house with natural light, whilst providing stunning views over the gardens and surrounding area.

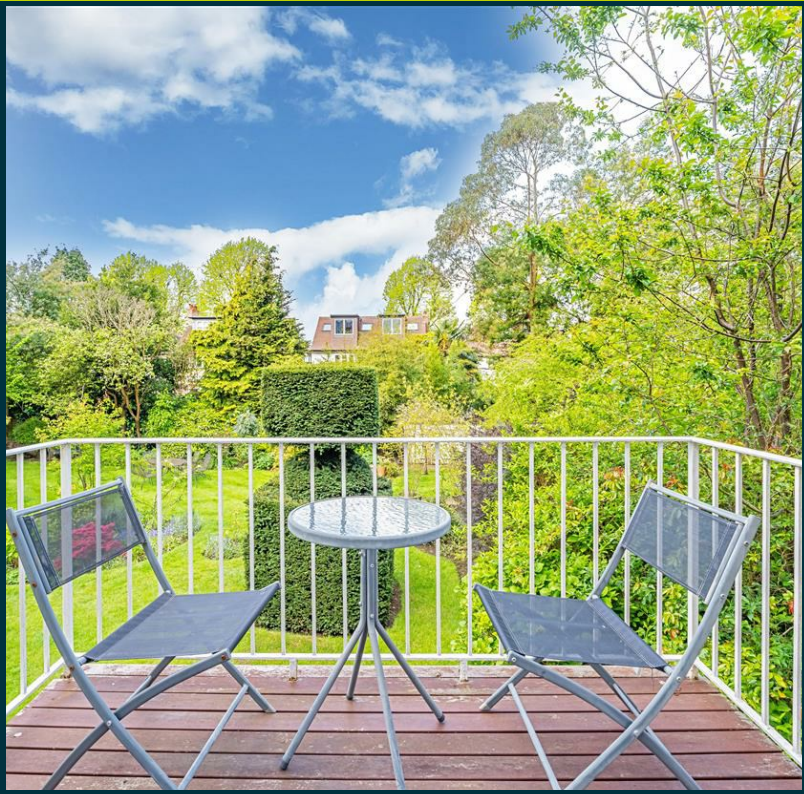
The house is held on a 953 years lease and has extremely low outgoing.

For someone seeking a truly unique and stunning home, this house offers it all.

EPC Rating E









## Riverdale Road

Approximate Gross Internal Area = 76.7 sq m / 826 sq ft

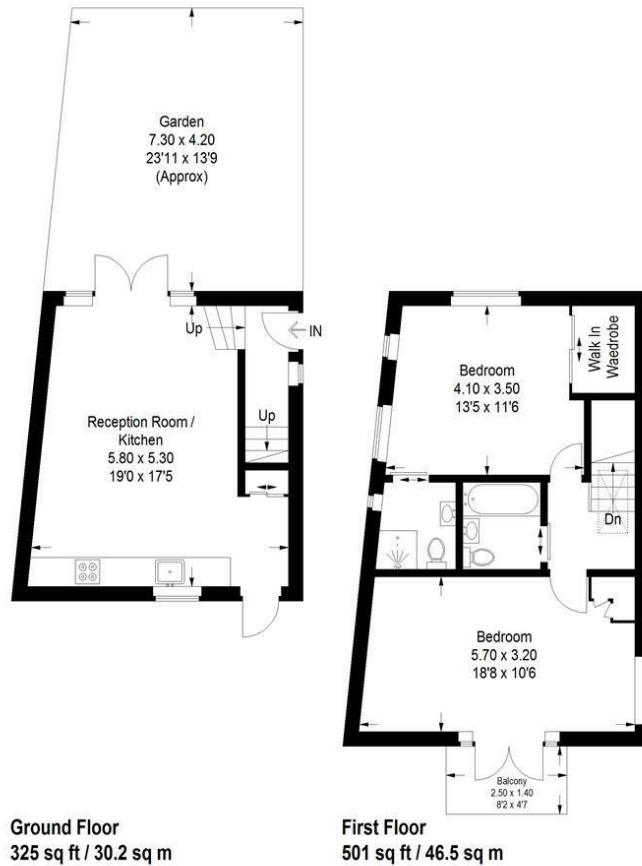
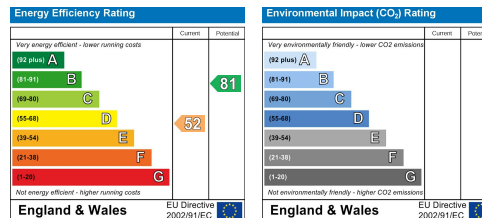


Illustration for identification purposes only, measurements are approximate, not to scale. FloorplansUsketch.com © (ID1076638)

Care has been taken in the preparation of these particulars, however, their accuracy is not guaranteed and they do not form part of any contract. Measurements stated must be considered maximum.



For more information or to book a viewing, please contact:

**020 8744 2434**

stmargarets@chasebuchanan.london

124 St Margarets Road, TW1 2AA

**ChaseBuchanan**