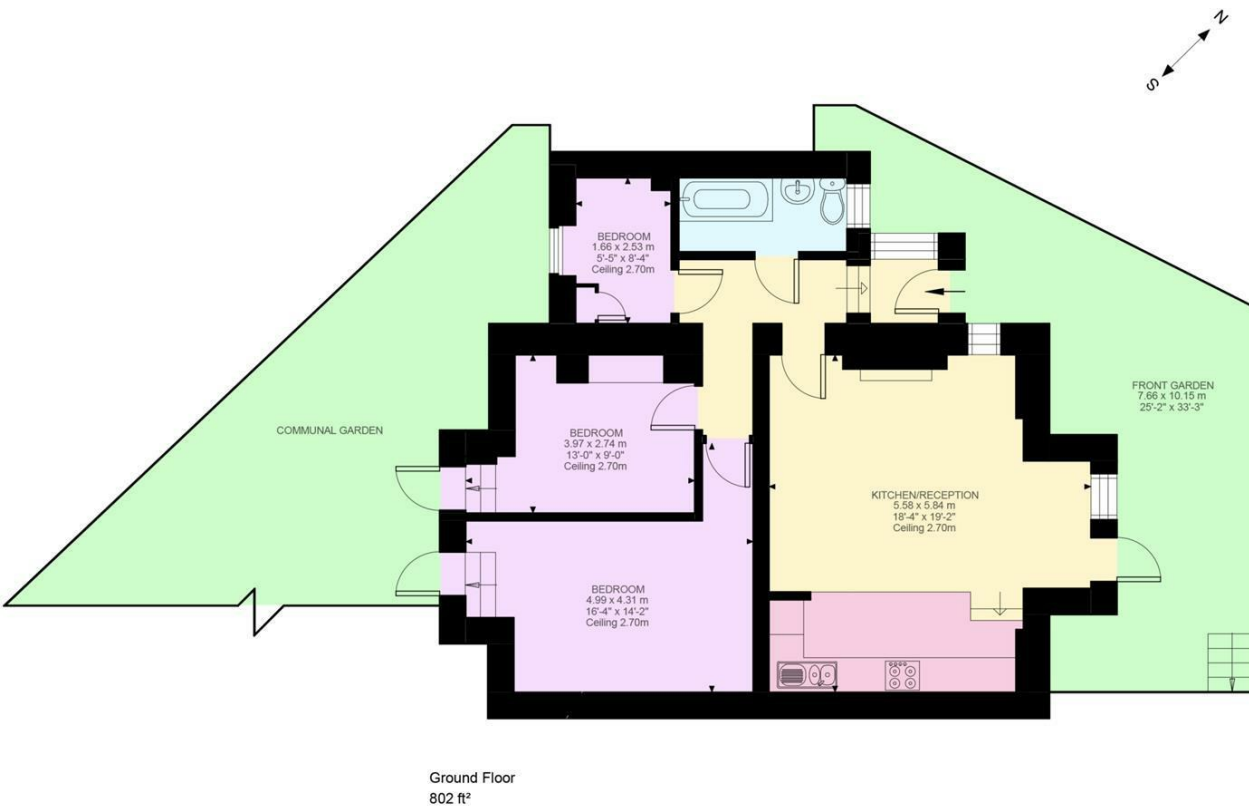


**\*\*Ravensbourne House  
Arlington Road  
East Twickenham  
TW1 2AX**

£595,000

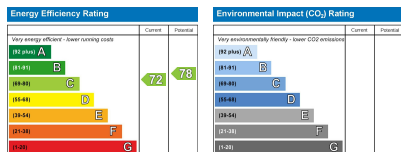
**ChaseBuchanan**





Arlington Road, TW1  
Approximate Gross Internal Area  
74.49 SQ.M / 802 SQ.FT

Illustration for identification purposes only. Not to scale.  
Floor Plan Drawn According To RICS Guidelines.



- Viewings accompanied by Chase Buchanan
- Share of Freehold
- Two/Three bedrooms
- Private courtyard
- Popular mansion block
- Ground floor maisonette
- No onward chain
- Landscaped communal gardens
- Recently refurbished including double glazing
- Sought after location

An immaculately presented must see ground floor maisonette.

Bright and light fully modernised property with its own entrance and direct access to front and back gardens as well as to the beautifully landscaped communal gardens. With solid oak flooring throughout, a feature fireplace, and new double glazed windows and doors, this feels like a comfortable home.

The property comprises of a large open plan living room with a modern fully equipped kitchen/dining, a functioning fireplace. Two/ three bedrooms, a modern well-appointed bathroom with a heated towel rail, bathtub and a power shower, there is also resident' bike storage.

The property comes as a share of freehold and is offered with vacant possession and with no onward chain.

It is located on one of the most desirable residential tree-lined streets in East Twickenham, a walking distance from Richmond town center and within the catchments of several OFSTED outstanding schools.

Arlington Road is a quiet residential road situated 0.3 miles to the banks of the River Thames with its towpath walks into Richmond offering both the Overground and Underground services into town. St Margarets station and the local independent shops and cafes are also a short walk from the property. Further places of interest include Kew Gardens (1.5 miles), Twickenham Stadium (1.6 miles) and Marble Hill Park (0.5 mile). Local Ofsted 'Outstanding' rated schools include Deer Park School (0.13 miles), Orleans Primary School (0.48 miles), The Vineyard School (0.62 miles), Grey Court School (1.32 miles) and Radnor House (1.51 miles). Local transport links include numerous bus routes to surrounding areas, plus frequent trains to central London via South West trains from St. Margarets and Richmond stations and London Underground's District Line (West End 38 minutes) from Richmond station.

For more information or to book a viewing, please contact:

020 8744 2434

**ChaseBuchanan**

124 St Margarets Road, St Margarets, TW1 2AA

Care has been taken in the preparation of these particulars, however, their accuracy is not guaranteed and they do not form part of any contract. Measurements stated must be considered maximum.