

**Kenley Road
St Margarets Village
TW1 1JU**

£2,250

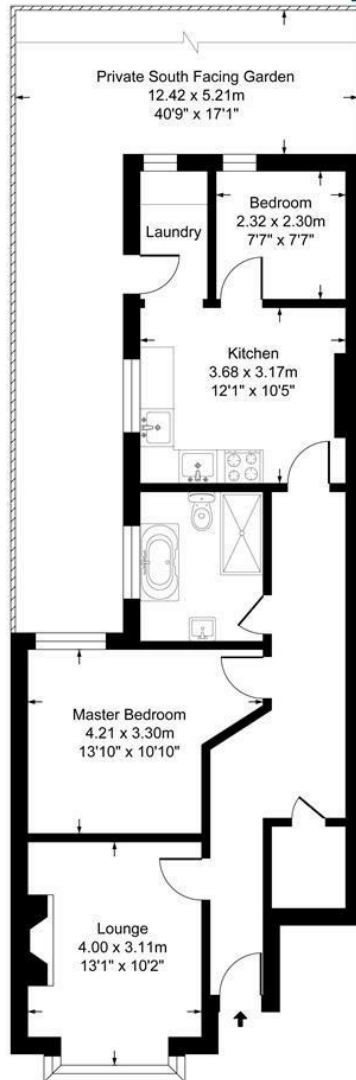
ChaseBuchanan



Kenley Road

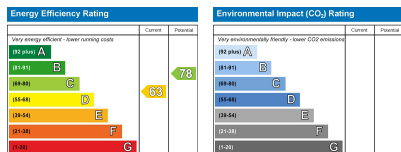
Approx. Gross Internal Floor Area
67.8 Sq M - 730 Sq Ft

ChaseBuchanan



Ground Floor

Illustration for identification purposes only, measurements are approximate, not to scale.



- Viewings accompanied by Chase Buchanan
- Two bedrooms
- EPC D
- Whole South facing private garden
- Ground floor
- Close to station

This charming two bedroom ground floor period maisonette benefitting from a private garden, is situated in the popular Moor Mead Park area, close to St Margarets station, shops, and cafes. Kenley Road is a very sought after location in St Margarets for families and young professionals.

The residence boasts a functional layout comprising a charming front reception room with a feature fireplace, two bedrooms, a separate kitchen/breakfast room with a separate utility room, a modern luxury fitted four piece bathroom, and quite uniquely has the whole private South facing rear garden.

For more information or to book a viewing, please contact:

020 8744 2434

ChaseBuchanan

124 St Margarets Road, St Margarets, TW1 2AA