



**Ailsa Road  
St Margarets Trust**

**£2,500,000**

**ChaseBuchanan**



## Key Features

- Viewings accompanied by Chase Buchanan
- Four/Five bedrooms
- Detached family house
- Direct access to the Trust Grounds
- Large secluded garden
- Three reception rooms
- Off street parking
- Excellent condition throughout



## Description

A rare opportunity to purchase this delightful four/five bedroom detached house benefiting from direct access on to the St Margarets Trust Grounds.

The property is in excellent condition and offers spacious and well proportioned accommodation throughout. The ground floor comprises a bright through reception room, a large kitchen/breakfast room with stunning vaulted ceilings, and a further large separate study/bedroom.

The upper floors benefit from four double bedrooms, one with ensuite and a large separate family bathroom.

To the rear is a large attractive and secluded rear garden, which benefits from direct access onto the prettiest of the three St Margarets pleasure gardens with mature parkland divided by a pretty Thames tributary linked by ornate bridges.

There is also a large landscaped front garden with off street parking.

Internal viewing is highly recommended by the vendors' sole agents Chase Buchanan at the earliest opportunity.



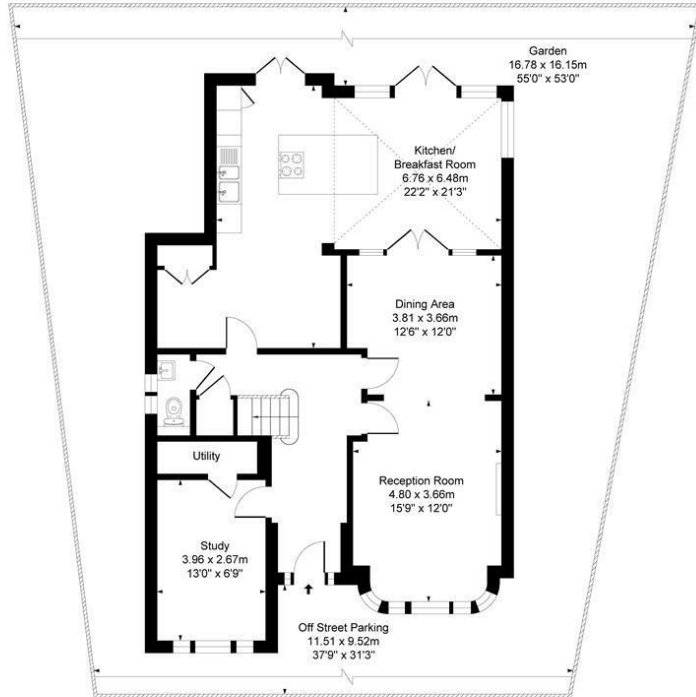




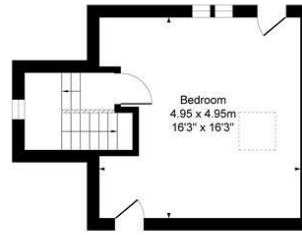


# Ailsa Road TW1

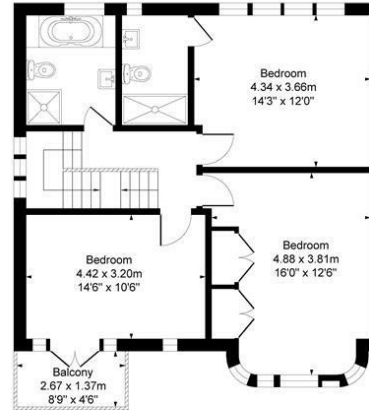
Approx. Gross Internal Floor Area  
201.3 Sq M - 2167 Sq Ft



Ground Floor  
Approximate Floor Area  
1098.94 sq.ft  
(102.09 sq.m)



Second Floor  
Approximate Floor Area  
301.83 sq.ft  
(28.04 sq.m)



First Floor  
Approximate Floor Area  
766.23 sq.ft  
(71.18 sq.m)

ChaseBuchanan

Illustration for identification purposes only, measurements are approximate, not to scale.  
Produced By Esjay Property Marketing

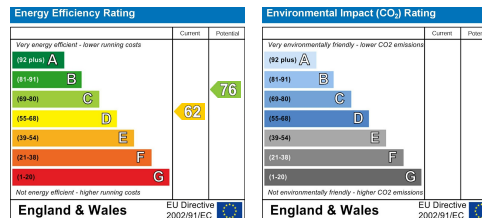
For more information or to book a viewing, please contact:

**020 8744 2434**

stmargarets@chasebuchanan.london

124 St Margarets Road, TW1 2AA

Care has been taken in the preparation of these particulars, however, their accuracy is not guaranteed and they do not form part of any contract. Measurements stated must be considered maximum.



**ChaseBuchanan**