

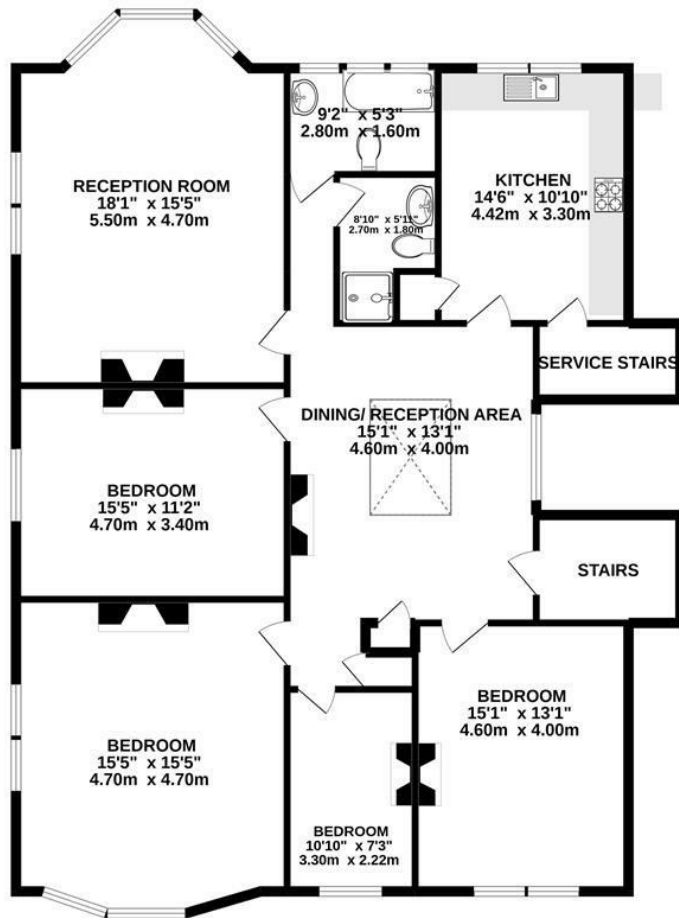
**Balmoral Mansions  
East Twickenham  
TW1 2HZ**

£4,500 PCM

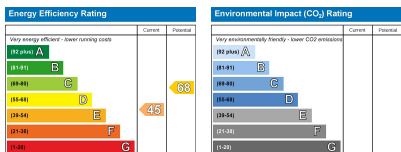
**ChaseBuchanan**



TOP FLOOR



TOTAL FLOOR AREA : 1656sq.ft. (153.8 sq.m.) approx.  
 Produced solely for Chase Buchanan  
 Made with MetroPix ©2022



- Victorian riverside mansion block
- Two bathrooms
- Immaculate condition
- Communal gardens
- Four bedrooms
- Prime location
- Top floor
- EPC - E

A substantial, beautifully decorated four bedroom apartment situated on the top floor of this impressive Victorian riverside mansion block at the foot of Richmond Bridge. This beautiful property welcomes you with a large entrance hall, gorgeous double aspect reception room, stunning kitchen/diner, four very good sized bedrooms and two luxury bathrooms. With wooden floors throughout, great storage and a fantastic location being just a short walk over the bridge to Richmond, this is a great opportunity to live in this prime location. St Margarets village with the local coffee shops and restaurants is also just a short walk away.

Chase Buchanan are bonded members of ARLA PropertyMark.

For more information or to book a viewing, please contact:

020 8744 2888

**ChaseBuchanan**

124 St Margarets Road, St Margarets, TW1 2AA