



**Chase**Buchanan

## Moor Mead Road, St Margarets village £2,875

- Three double bedrooms
- Two bathrooms
- Private garden
- Views over Moor Mead park
- Close to St Margarets station and local shops
- EPC - D

A prime example of one of the gorgeous Edwardian maisonettes over looking Moor Mead Park and situated within walking distance of St Margarets village and train station. Picture yourself drinking your morning coffee on the balcony watching the world go by on the park, and make the most of the eat in kitchen entertaining your friends and family. With a bright and beautiful reception room with a gorgeous period fireplace, three double bedrooms, two modern bathrooms and an extra study for those needing extra space to work from home, and the added benefit of a private garden. Chase Buchanan are bonded members of ARLA Propertymark.

This property has an energy performance rating of D







For more information or to book a viewing, please contact:

**020 8744 2888**

Chase Buchanan St Margarets Lettings  
124 St Margarets Road, St Margarets, TW1 2AA

**ChaseBuchanan**

## Moor Mead Road TW1

Approximate Gross Internal Floor Area = 99.6 sq m / 1072 sq ft

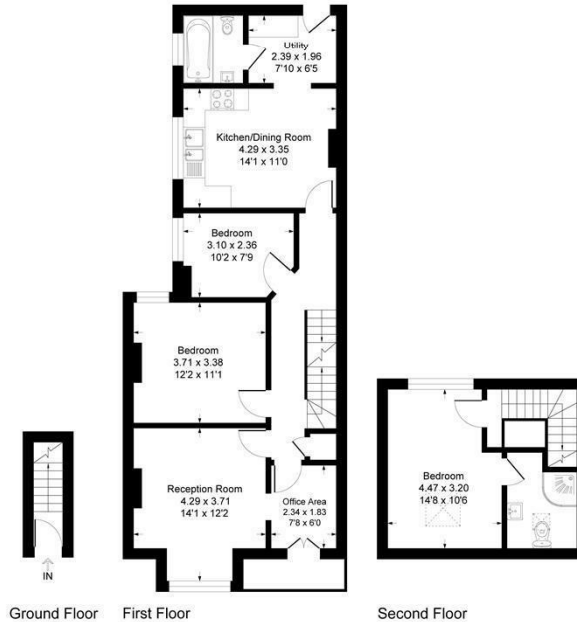


Illustration for identification purposes only, measurements are approximate, not to scale.

Care has been taken in the preparation of these particulars, however, their accuracy is not guaranteed and they do not form part of any contract. Measurements stated must be considered maximum.



**ChaseBuchanan**