

**Cambridge Road  
East Twickenham  
TW1 2HL**

£1,200,000

**ChaseBuchanan**

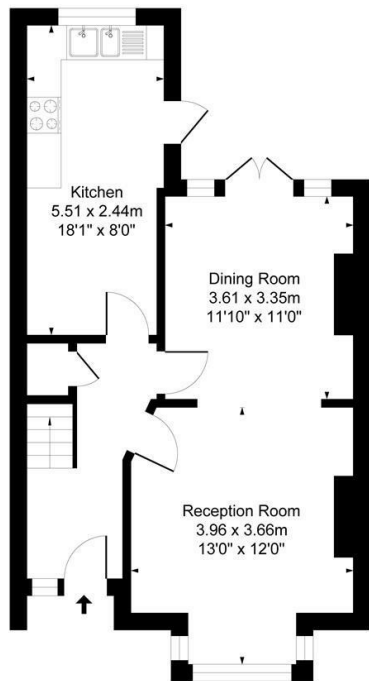




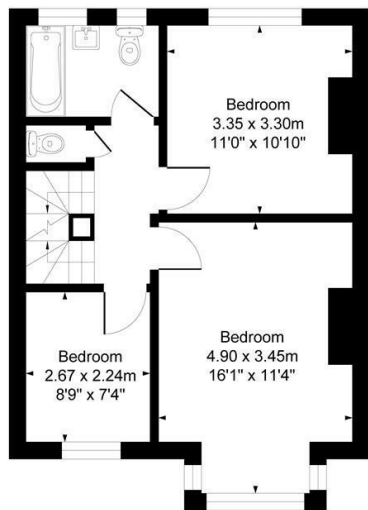
## Cambridge Road TW1

Approx. Gross Internal Floor Area  
114.2 Sq M - 1230 Sq Ft

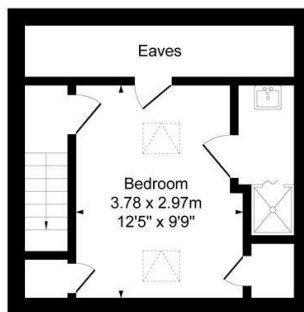
ChaseBuchanan



Ground Floor  
Approximate Floor Area  
551.17 sq.ft  
(51.20 sq.m)



First Floor  
Approximate Floor Area  
483.33 sq.ft  
(44.90 sq.m)



Second Floor  
Approximate Floor Area  
195.56 sq.ft  
(18.16 sq.m)

Illustration for identification purposes only, measurements are approximate, not to scale.  
Produced By Esjay Property Marketing

- Viewings accompanied by Chase Buchanan
- Requires some modernisation
- Private garden
- Vacant possession
- Four bedroom family house
- Two receptions
- Yards from the River Thames
- Scope for further extension (STP)

This four bedroom family home is located on the extremely desirable Cambridge Road, situated a few hundred yards from Richmond Bridge and the riverside in East Twickenham.

The property offers well proportioned accommodation arranged over three floors and still boasts the opportunity to further extend (STP). The residence currently comprises a through reception room, extended kitchen leading to the private rear garden.

The upper floors benefit from four bedrooms, one with ensuite and a separate family bathroom.

The property does require some modernisation throughout and is offered to the market with full vacant possession.

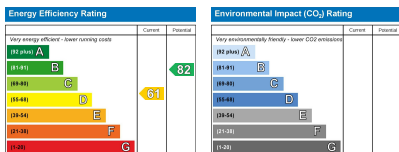
This wonderful family home is available to view immediately through the vendors' sole agent Chase Buchanan.

For more information or to book a viewing, please contact:

020 8744 2434

ChaseBuchanan

124 St Margarets Road, St Margarets, TW1 2AA



Care has been taken in the preparation of these particulars, however, their accuracy is not guaranteed and they do not form part of any contract. Measurements stated must be considered maximum.