

**Sidney Road  
St Margarets Village  
TW1 1JR**

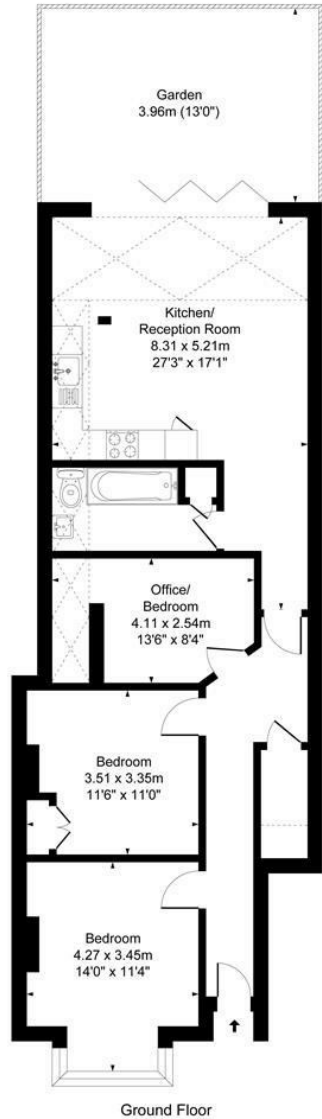
£750,000

**ChaseBuchanan**



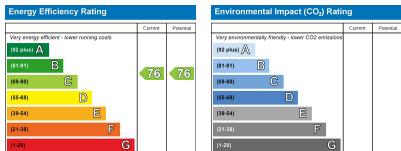
# Sidney Road TW1

Approx. Gross Internal Floor Area  
86.0 Sq M - 926 Sq Ft



Ground Floor

Illustration for identification purposes only, measurements are approximate, not to scale.  
Produced By Esjay Property Marketing



Care has been taken in the preparation of these particulars, however, their accuracy is not guaranteed and they do not form part of any contract. Measurements stated must be considered maximum.

- Viewings accompanied by Chase Buchanan
- Adapatable accomodation
- Extended Kitchen/Breakfast room
- Excellent condition throughout
- Edwardian maisonette
- Two/Three bedrooms
- Large South facing garden
- Share of freehold
- Ground floor
- Premier treelined road in the Village

This substantially extended ground floor Edwardian maisonette with a large south-facing rear garden. The residence offers adaptable accommodation comprising two/three bedrooms depending on how you wish to use it.

The property has recently been fully refurbished and extended boasting an excellent condition throughout.

The residence further boasts a share of the freehold

It is situated on a highly sought-after treelined road close to the village of St Margarets with many local shopping amenities, transport links providing access to London, and highly regarded local schools.

An appointment to view is highly recommended via the vendor's sole agent Chase Buchanan at the earliest opportunity.

EPC - TBC

For more information or to book a viewing, please contact:

020 8744 2434

**Chase Buchanan**

124 St Margarets Road, St Margarets, TW1 2AA