



**Railshead Road
St Margarets/Old**

£479,950

ChaseBuchanan

Key Features

- Viewings accompanied by Chase Buchanan
- New Build
- One double bedroom
- Private balcony with River Views
- Quiet Riverside development
- Lift in block
- Stunning condition throughout
- Vacant possession



Description

A selection of newly built amazing one and two double bedroom first floor apartments with lift in block and amazing River Thames views from private balconies.

The apartments boasts a contemporary open plan kitchen/living/dining areas with patio doors leading onto balconies with mainly glazed balustrading which afford spectacular views.

The apartments is finished to the highest standards including double glazing and under floor heating throughout,

The kitchen comes with composite stone work surfaces together with full range of branded integrated appliances and the glorious bathrooms come with designer sanitary ware.

For the more security conscious, all apartment entrance doors come with fitted high security locks and audio/visual door entry system for peace of mind and to accommodate visitors. Their is also the added benefit of secure basement parking (for an extra cost) and a lift serving all floors.

St Margarets Waterside is a stunning development of luxurious apartments with spectacular river views on the Old Isleworth/St Margarets border in the London Borough of Richmond.





Waterside TW1

Approx. Gross Internal Floor Area
54.0 Sq M - 582 Sq Ft

ChaseBuchanan

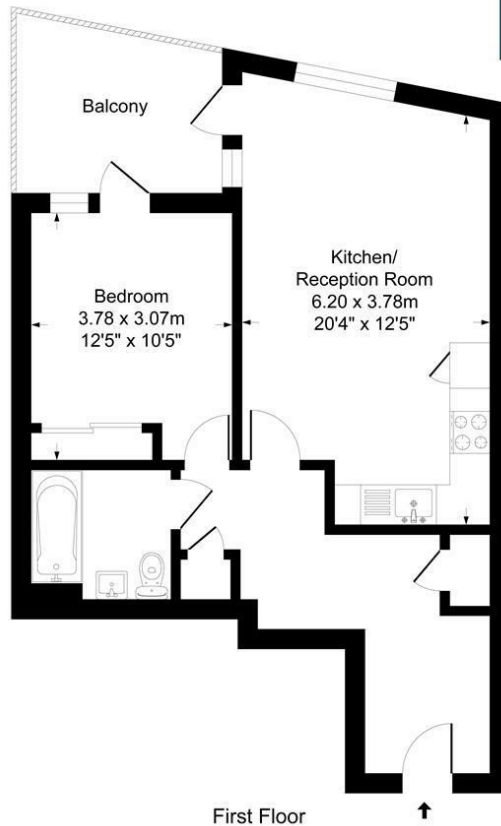


Illustration for identification purposes only, measurements are approximate, not to scale.

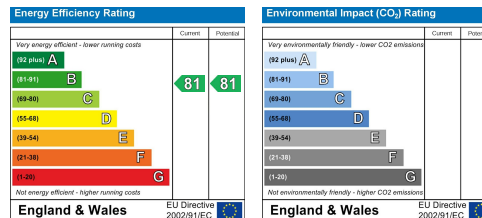
For more information or to book a viewing, please contact:

020 8744 2434

stmargarets@chasebuchanan.london

124 St Margarets Road, TW1 2AA

Care has been taken in the preparation of these particulars, however, their accuracy is not guaranteed and they do not form part of any contract. Measurements stated must be considered maximum.



ChaseBuchanan