



**Gordon Avenue  
St Margarets**

**£1,150,000**

**ChaseBuchanan**

## Key Features

- Viewings accompanied by Chase Buchanan
- Three double bedrooms
- Victorian family house
- Large kitchen/breakfast room
- Scope for further extension (STP)
- Requires some modernisation
- Vacant possession
- Popular residential crescent



## Description

This three double bedroom Victorian family home situated in this sought after location in St Margarets comes to the market requiring some modernisation, whilst having been subject to significant extension already to the ground floor, there is scope to extend further. (STP)

The ground floor comprises, two separate reception rooms, a large shower room, and a huge kitchen/breakfast/family room leading to the private rear garden.

On the first floor, there are three generous double bedrooms and a family bathroom.

The property is located on one of St Margarets most popular roads, and is only moments away from the village and mainline train station.

Viewings are by appointment only, and available via the vendors' sole agent, Chase Buchanan.





## Gordon Avenue TW1

Approx. Gross Internal Floor Area  
126.7 Sq M - 1365 Sq Ft

ChaseBuchanan

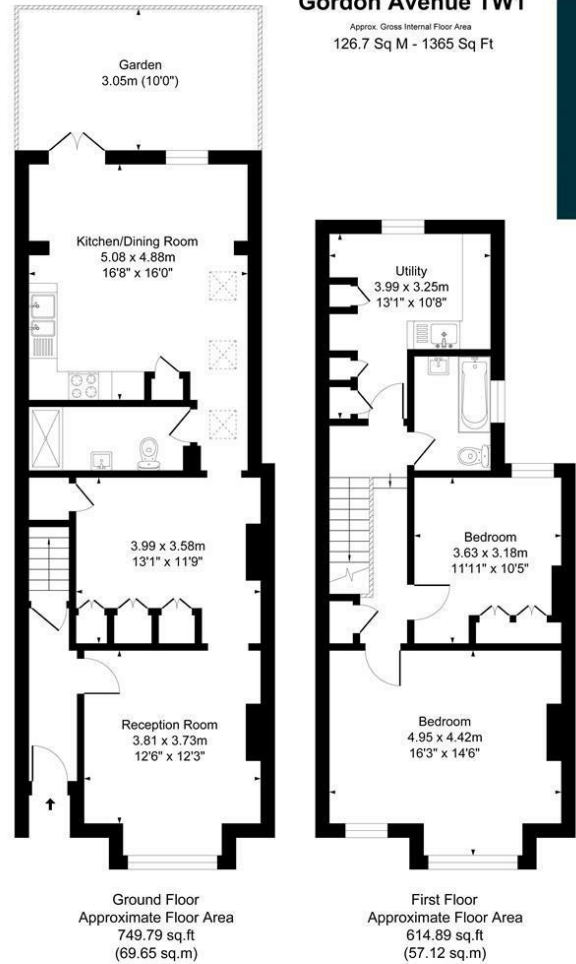


Illustration for identification purposes only, measurements are approximate, not to scale.

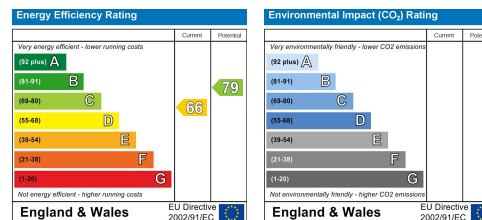
For more information or to book a viewing, please contact:

**020 8744 2434**

stmargarets@chasebuchanan.london

124 St Margarets Road, TW1 2AA

Care has been taken in the preparation of these particulars, however, their accuracy is not guaranteed and they do not form part of any contract. Measurements stated must be considered maximum.



**ChaseBuchanan**