



**Railshead Road  
St Margarets/Old**

£674,950

**ChaseBuchanan**

## Key Features

- Viewings accompanied by Chase Buchanan
- New Build
- Two double bedrooms
- Private balcony with River Views
- Quiet Riverside development
- Lift in block
- Stunning condition throughout
- Two bathrooms



## Description

A selection of newly built amazing one and two double bedroom first floor apartments with lift in block and amazing River Thames views from private balconies.

The apartments boasts a contemporary open plan kitchen/living/dining areas with patio doors leading onto balconies with mainly glazed balustrading which afford spectacular views.

The apartments is finished to the highest standards including double glazing and under floor heating throughout,

The kitchen comes with composite stone work surfaces together with full range of branded integrated appliances and the glorious bathrooms come with designer sanitary ware.

For the more security conscious, all apartment entrance doors come with fitted high security locks and audio/visual door entry system for peace of mind and to accommodate visitors. Their is also the added benefit of secure basement parking (for an extra cost) and a lift serving all floors.

St Margarets Waterside is a stunning development of luxurious apartments with spectacular river views on the Old Isleworth/St Margarets border in the London Borough of Richmond.

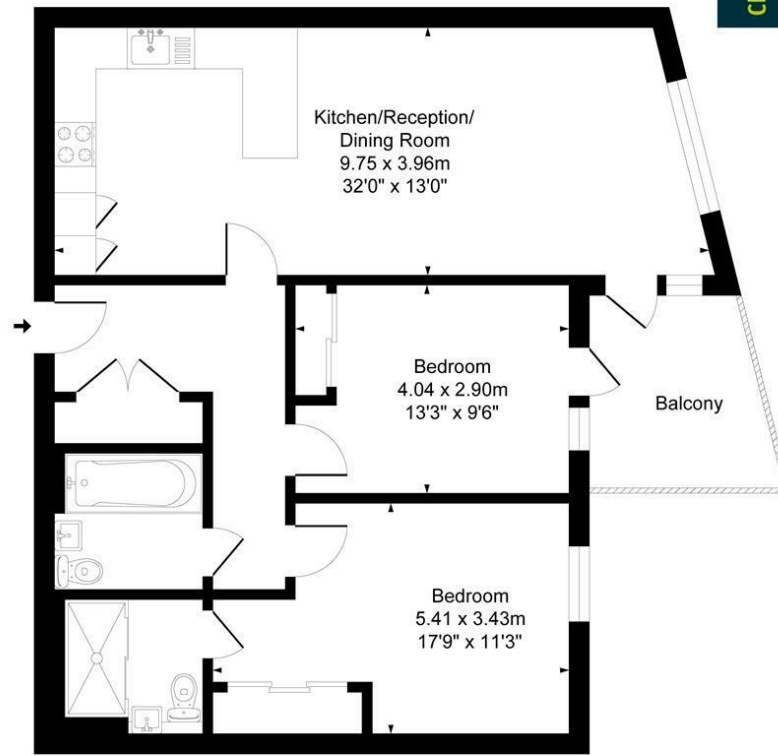




# Waterside TW1

Approx. Gross Internal Floor Area  
85.5 Sq M - 920 Sq Ft

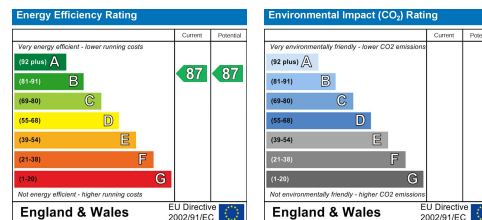
ChaseBuchanan



First Floor

Illustration for identification purposes only, measurements are approximate, not to scale.

Care has been taken in the preparation of these particulars, however, their accuracy is not guaranteed and they do not form part of any contract. Measurements stated must be considered maximum.



For more information or to book a viewing, please contact:

**020 8744 2434**

stmargarets@chasebuchanan.london

124 St Margarets Road, TW1 2AA

**ChaseBuchanan**