

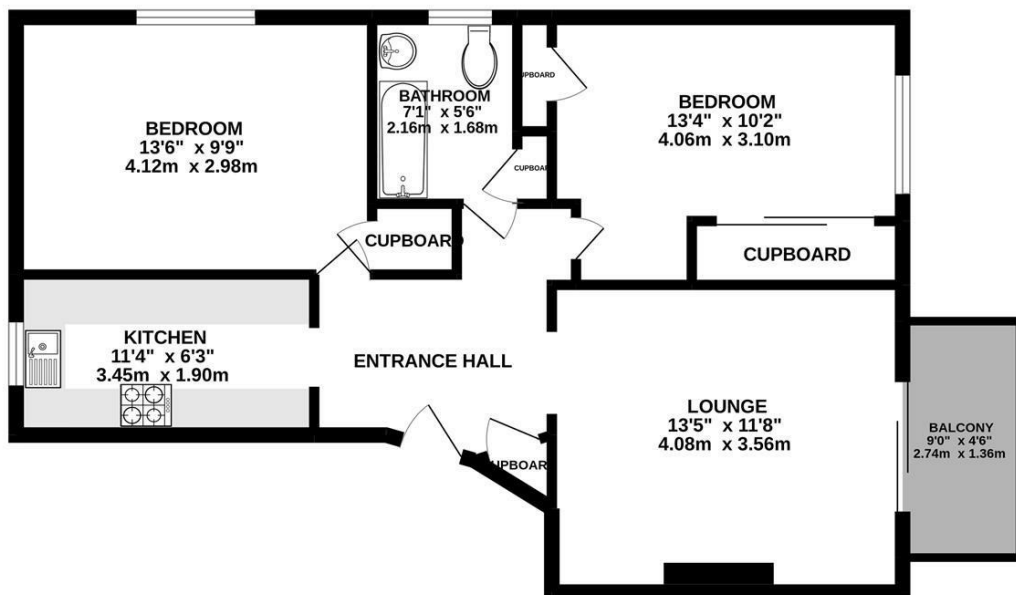
**Richmond Road  
East Twickenham  
TW1 2DS**

£4,334 PCM

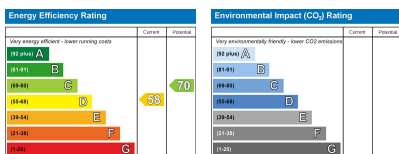
**ChaseBuchanan**



TOP FLOOR  
618 sq.ft. (57.4 sq.m.) approx.



TOTAL FLOOR AREA : 618 sq.ft. (57.4 sq.m.) approx.  
Produced solely for Chase Buchanan  
Made with Metroplex ©2022



Care has been taken in the preparation of these particulars, however, their accuracy is not guaranteed and they do not form part of any contract. Measurements stated must be considered maximum.

- Short let for three months
- Balcony
- Top floor
- Art deco building
- Two double bedrooms
- Lift in block
- Close to Richmond Bridge
- EPC - D

**\*SHORT LET\*** - Set in an iconic 'Art Deco' style building, this top floor purpose built two double bedroom apartment with the added rare benefit of a private balcony.

The apartment is ideally located within striking distance of Richmond Bridge, benefiting from Richmond and St Margaret's town centre's shopping facilities and train and tube links to London.

The residence does further boast lift access and off street parking spaces for the block on a first come first served basis, which are all CCTV monitored. Internally the property is beautifully presented throughout.

Chase Buchanan are bonded members of ARLA PropertyMark.

For more information or to book a viewing, please contact:

020 8744 2888

**ChaseBuchanan**

124 St Margarets Road, St Margarets, TW1 2AA