



TWENTY ONE

21  
MATHURS

**Cheyne Avenue  
Twickenham**

£850,000

**ChaseBuchanan**

## Key Features

- Viewings accompanied by Chase Buchanan
- Substantial family home
- Versatile accommodation
- Well presented throughout
- Separate office & conservatory
- Four bedrooms. Two shower rooms
- Swimming pool & games room
- Off street parking
- Easy access to station, shops & parks
- Good schools nearby

## Description

This substantial semi-detached family home, has been extended and improved throughout, combining traditional and modern features, complementing this very appealing property.

With well-proportioned living spaces and a bright décor throughout, the ground floor has an elegant living room with two bay windows and a feature fireplace, a dining room leading into the kitchen, a separate office, a conservatory overlooking the garden, plus a useful utility room, shower room with WC and a further separate WC. Upstairs provides four bedrooms and a smart shower room.

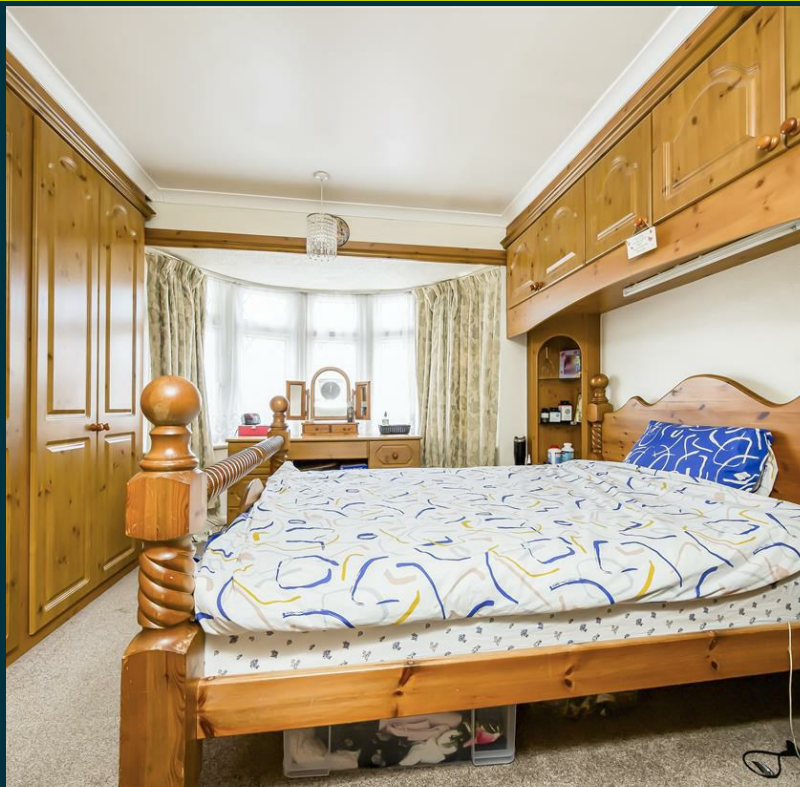
The rear garden is a particular feature at 120', with a southerly aspect, and a large patio area, a swimming pool and a games room, providing plenty of options for relaxing and entertaining. The front provides off-street parking.

The spacious interior provides the perfect balance of flexible space and comfort, with plenty of storage options throughout.

Cheyne Avenue is a popular location within walking distance to Whitton Station and the high street, with a variety of shops and restaurants and some excellent schools nearby, including Turing House School and Heathfield Infant & Junior Schools all rated 'good' by Ofsted. Twickenham town centre is nearby and easy access to the A316 connecting to the M3/M25 and into central London and Heathrow Airport. Crane Park and the nature reserve with pleasant walks along the River Crane are also within easy access.

To arrange a viewing please contact the vendors' sole agent Chase Buchanan.





### Cheyne Avenue TW2

Approx. Gross Internal Floor Area  
219.2 Sq M - 2360 Sq Ft

Chase Buchanan

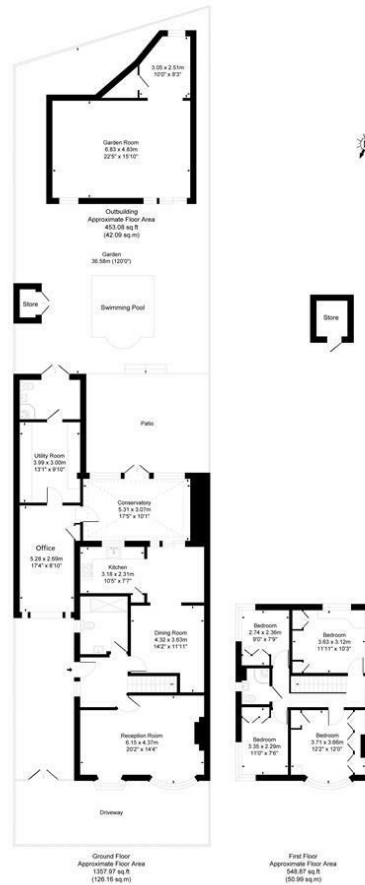
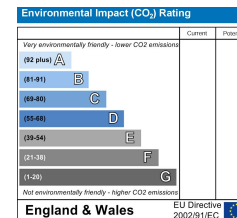
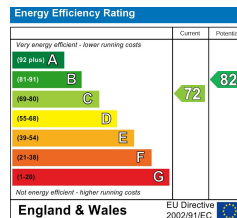


Illustration for identification purposes only, measurements are approximate, not to scale.  
Produced by Eigna Property Marketing

Care has been taken in the preparation of these particulars, however, their accuracy is not guaranteed and they do not form part of any contract. Measurements stated must be considered maximum.



For more information or to book a viewing, please contact:

**020 8744 0101**

twickenham@chasebuchanan.london

4 York Street, TW1 3LD

**ChaseBuchanan**