



**Bonser Road  
Twickenham**

**£1,500,000**

**ChaseBuchanan**



## Key Features

- Viewings accompanied by Chase Buchanan
- Fabulous period home
- Spacious living areas
- Sophisticated kitchen/dining room
- Double reception room
- Five bedrooms. Two bathrooms
- Very well presented
- Secluded garden with large out-building
- Easy access to station, river and parks
- Excellent schools nearby

## Description

Situated on a highly desirable road, this period family home combining traditional and modern features is close to both Strawberry Hill & Twickenham amenities and some excellent schools.

With well-proportioned living spaces and a pleasing, neutral décor throughout, the ground floor has an elegant double reception room with a log burner and wood flooring, a well-designed kitchen/dining room by Roundhouse with plenty of preparation areas and space for a large table for dining, and skylights maximising the light, plus a utility area and guest WC. Upstairs provides three double bedrooms and a smart family bathroom, with a further two bedrooms and a shower room on the top floor.

The rear garden provides the perfect spot for 'al-fresco' dining or relaxing with a patio area, 'ever-green' grass, mature trees and shrubs and a large outbuilding accessed from the garden or the side access.

Very well presented with some notable features including, high ceilings, feature fireplaces, double-glazed sash windows and plenty of storage options throughout.

Ideally located to take advantage of all that Strawberry Hill and Twickenham have to offer, from the delightful Radnor Gardens on the river to the ambient restaurants and charming riverside pubs and walks. Situated within easy access to both Richmond and Kingston with more comprehensive amenities. Commuter links are excellent with two stations providing direct services to London Waterloo, frequent bus routes and easy access to the M3/M25 motorways and Heathrow Airport. The surrounding area is well suited for family life with numerous recreational facilities, fabulous golf courses, riding stables and sports amenities. Strawberry Hill House, host to the annual Strawberry Hill Music Festival, is internationally renowned as Britain's finest example of Georgian Gothic Revival architecture. Some excellent schools including St Richard Reynolds, Waldegrave and Twickenham Primary Academy, rated 'outstanding' by Ofsted are all close by.









# Bonser Road TW1

Approx. Gross Internal Floor Area  
210.7 Sq M - 2268 Sq Ft

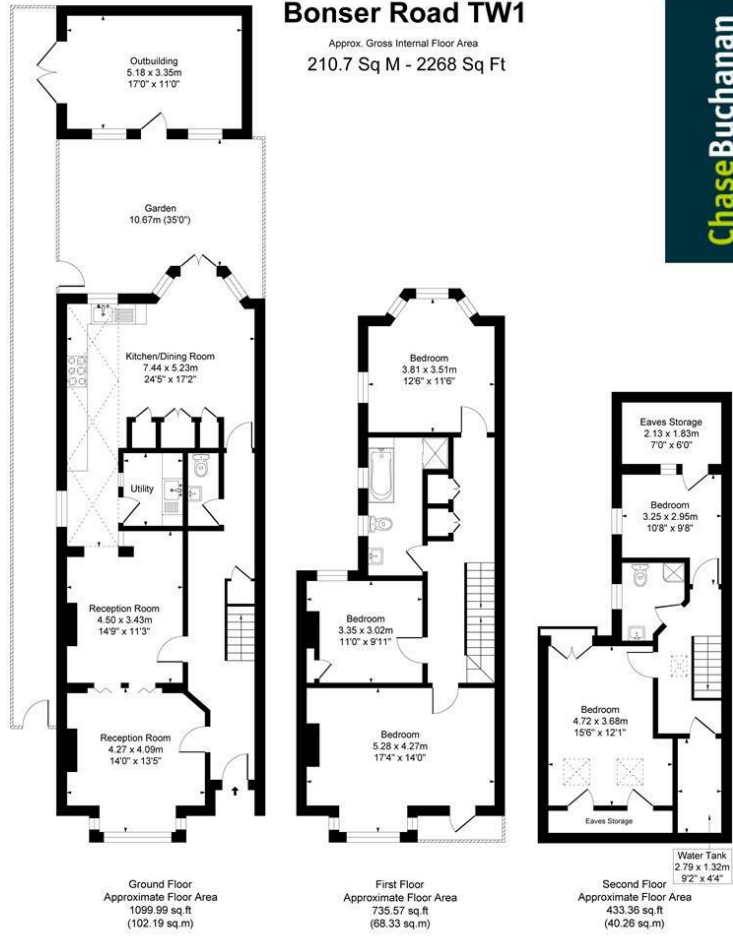


Illustration for identification purposes only, measurements are approximate, not to scale.  
Produced By Esjay Property Marketing

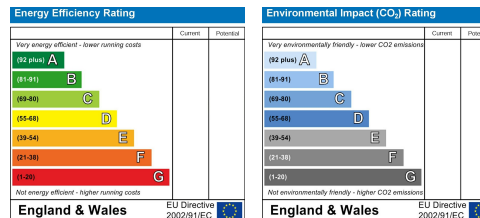
For more information or to book a viewing, please contact:

**020 8744 0101**

twickenham@chasebuchanan.london

4 York Street, TW1 3LD

Care has been taken in the preparation of these particulars, however, their accuracy is not guaranteed and they do not form part of any contract. Measurements stated must be considered maximum.



**ChaseBuchanan**