



119

**Shaftesbury Way  
Twickenham**

£895,000

**ChaseBuchanan**

## Key Features

- Viewings accompanied by Chase Buchanan
- Mid-terrace townhouse
- Very well presented
- Spacious living areas
- Four bedrooms. Two bathrooms
- Attractive rear garden
- Garage & parking
- Desirable cul-de-sac
- Close to station & amenities
- Excellent schools nearby

## Description

Forming part of the popular Fortescue Park development in Strawberry Hill, is this townhouse with well-proportioned living spaces over three levels.

Well presented with a pleasing décor, the ground floor has a separate kitchen/breakfast room with fitted units and integrated appliances leading into a dining area and steps down to the family room with wide glazed doors to the rear garden.

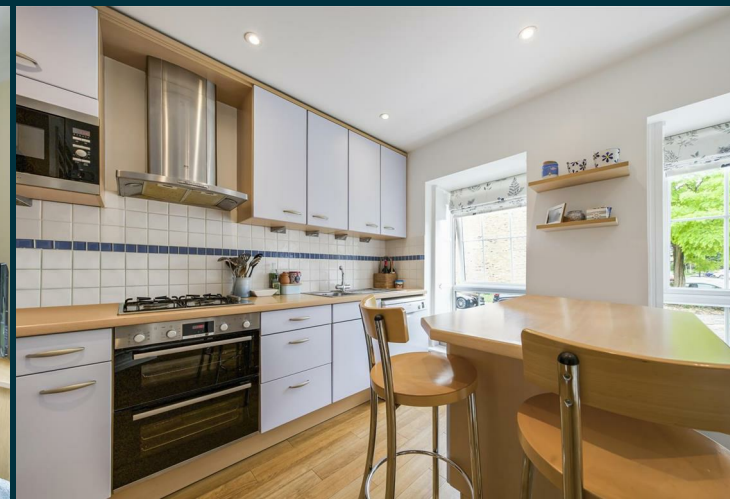
The first floor provides two double bedrooms, both with fitted storage, one with an en-suite bathroom, a further shower room and on the top floor, two bedrooms plus eaves storage.

Outside is an attractive, well-tended garden with a patio area, plenty of mature trees and shrubs, with off-street parking and an integral garage to the front.

Fortescue Park Estate has a fantastic community spirit and a family atmosphere. Annual events include a street summer BBQ and picnic.

There are good transport links in the area, with Strawberry Hill station a short walk away and regular buses into Richmond (District line tube) and Kingston. And a short drive to the M3, with good access to the M4/M25. The local area is well served by schools, both private and state-run, including St James School & Waldegrave School, both rated 'outstanding' by Ofsted.

To arrange an appointment to view, please call the vendors' Sole agent Chase Buchanan.





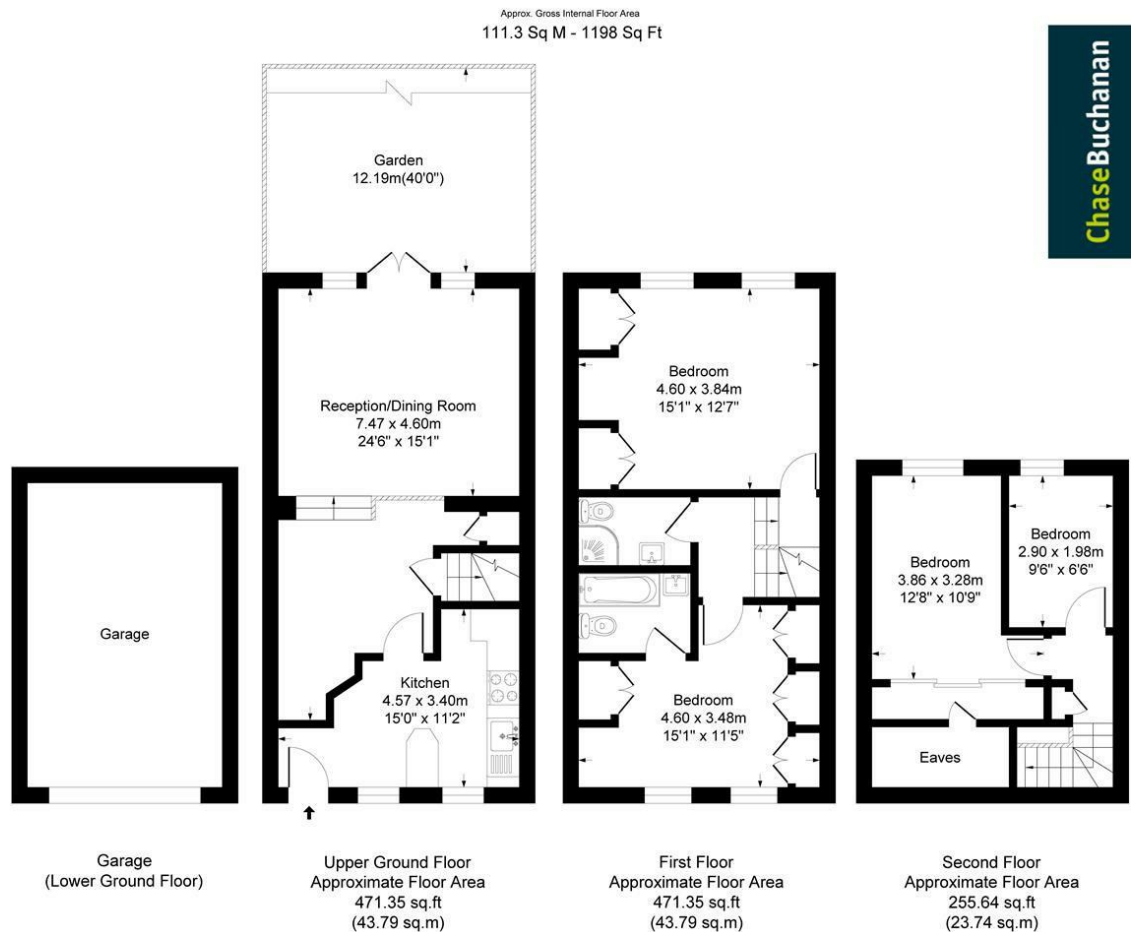
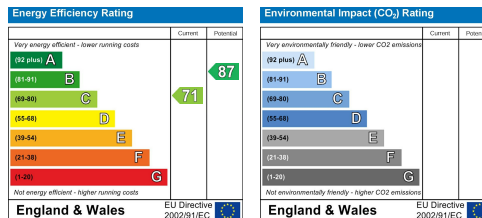


Illustration for identification purposes only, measurements are approximate, not to scale.

Care has been taken in the preparation of these particulars, however, their accuracy is not guaranteed and they do not form part of any contract. Measurements stated must be considered maximum.



For more information or to book a viewing, please contact:

**020 8744 0101**

twickenham@chasebuchanan.london

4 York Street, TW1 3LD

**ChaseBuchanan**