



**Glasbrook Avenue  
Twickenham**  
£550,000  
**ChaseBuchanan**



## Key Features

- Viewings accompanied by Chase Buchanan
- Semi-detached bungalow
- Well presented
- Three bedrooms
- Modern kitchen & shower room
- Secluded rear garden
- Off street parking & garage
- Easy access to station & shops
- Close to good schools
- Chain free

## Description

This semi-detached bungalow is located in the desirable 'Woodlawn Estate', within easy access to Whitton train station and Crane Park.

Well presented with a bright, neutral décor, providing a dining room, a modern fitted kitchen, a spacious reception room overlooking the garden, three bedrooms and a smart shower room.

The secluded rear garden has a large decked patio and plenty of mature trees and shrubs, ideal for relaxing and entertaining, whilst the front provides off-street parking and gated access to the detached garage with side access.

Further benefits include oak wood flooring, double-glazed windows, bespoke fitted wardrobes, good storage options and the possibility to extend. (STPP)

Glasbrook Avenue is within walking distance of Whitton Station and the high street, with a variety of shops and restaurants and some popular schools are nearby. Plus easy access to the A316 connecting to the M3/M25, Heathrow Airport and central London. Heathfield Recreation Park and Crane Park with pleasant walks along the River Crane are also close by.

Available chain free, to arrange a viewing, please contact the vendors' sole agent Chase Buchanan.









# Glasbrook Avenue TW2

Approx. Gross Internal Floor Area  
85.9 Sq M - 925 Sq Ft

ChaseBuchanan

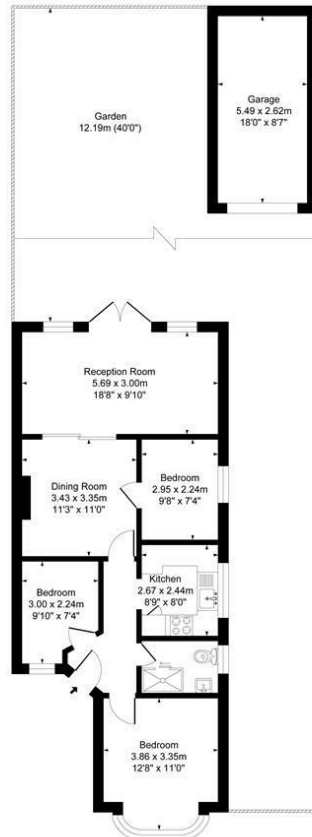
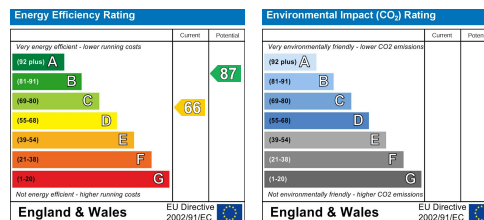


Illustration for identification purposes only, measurements are approximate, not to scale. Produced by Ejsay Property Marketing

Care has been taken in the preparation of these particulars, however, their accuracy is not guaranteed and they do not form part of any contract. Measurements stated must be considered maximum.



For more information or to book a viewing, please contact:

**020 8744 0101**

twickenham@chasebuchanan.london

4 York Street, TW1 3LD

**ChaseBuchanan**