



**Whitton Road
Twickenham**

£1,050,000

ChaseBuchanan

Key Features

- Viewings accompanied by Chase Buchanan
- Extended period home
- Very well presented
- Spacious accommodation
- Kitchen/breakfast room
- Five bedrooms. Three bathrooms
- Chain free
- Attractive rear garden
- Excellent schools close by
- Station & shops nearby

Description

Situated in an attractive row of period properties, this lovely family home combines some stylish features with modern fixtures and fittings and is close to Twickenham Station and some excellent schools.

With an internal area of just over 1500 sq ft. arranged over three levels, the ground floor has an elegant reception/dining room, a smart fitted kitchen/breakfast room plus a guest WC.

The first floor has two double bedrooms, a single bedroom, one ensuite shower room and a luxury bathroom and the top floor has two further double bedrooms and a shower room.

The stylish interior has been carefully considered as an integral part of the overall design with a pleasing décor and high-specification fixtures & fittings. With bespoke kitchen cabinetry with quality built-in appliances, oak wood flooring, custom made wardrobes and double-glazed windows. With plenty of storage throughout and an abundance of natural light, this home provides the perfect balance of flexible space and comfort.

The attractive garden has a decked patio area, some mature shrubs and rear access.

Whitton Road is ideally located to take advantage of all that Twickenham has to offer, from the range of boutique shops in Church Street, to the ambient restaurants and delightful riverside pubs and walks. Situated within a pleasant walk to Marble Hill Gardens along the riverside and within easy access of both Richmond and Kingston with more comprehensive amenities. Commuter links are excellent with Twickenham station providing direct services to London Waterloo and easy access to the M3/M25 motorways and Heathrow Airport. The local area is well served by schools, both private and state-run, including St Richard Reynolds and St Mary's C of E Primary School, rated Outstanding by Ofsted.

Available chain free, to arrange a viewing, please contact the vendors' sole agent Chase Buchanan.





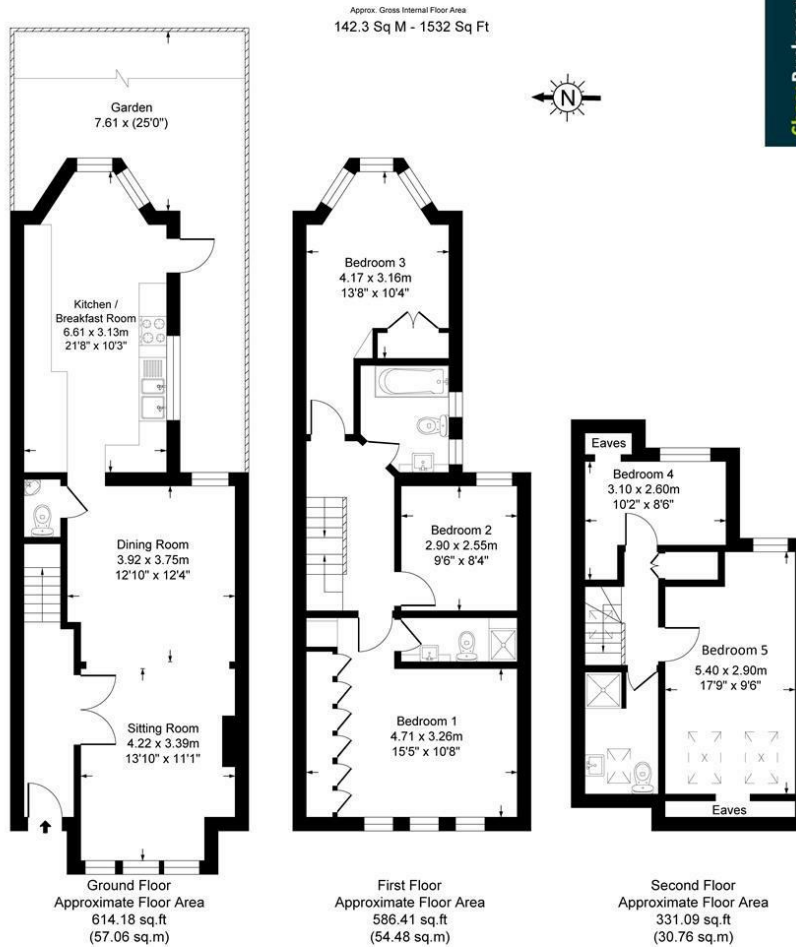
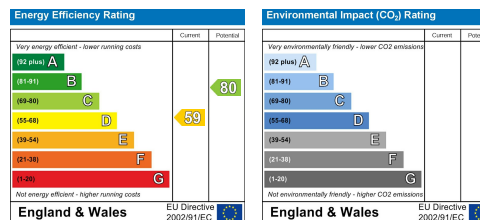


Illustration for identification purposes only, measurements are approximate, not to scale.
Produced By Eijay Property Marketing

Care has been taken in the preparation of these particulars, however, their accuracy is not guaranteed and they do not form part of any contract. Measurements stated must be considered maximum.



For more information or to book a viewing, please contact:

020 8744 0101

twickenham@chasebuchanan.london

4 York Street, TW1 3LD

ChaseBuchanan