



**Waldegrave Road
Twickenham**

£1,200,000

ChaseBuchanan

Key Features

- Viewings accompanied by Chase Buchanan
- Stunning penthouse apartment
- Fabulous west-facing terrace
- Luxury finish throughout
- Sophisticated kitchen/living room
- Two double bedrooms. Two bathrooms
- Communal garden. Gated, secure parking
- Share of freehold
- Close to station, shops, riverside
- Excellent schools nearby

Description

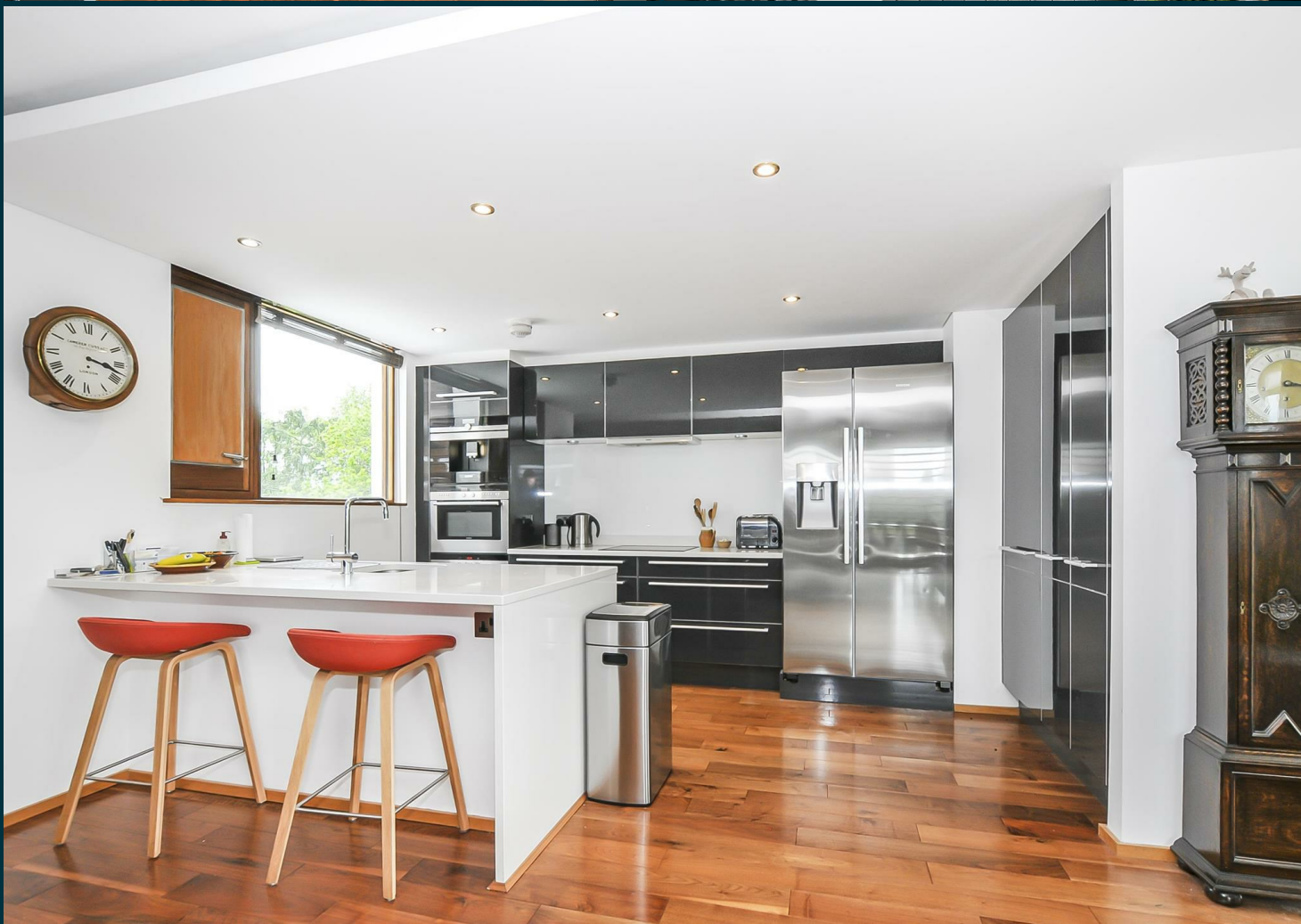
This stunning penthouse apartment by the award-winning Quad Projects is built around a tranquil landscaped area incorporating Japanese Zen garden characteristics with ornamental planting, water and rock features and is a classic example of Modernist architecture.

Designed to maximise space and light this contemporary penthouse offers bright and spacious accommodation, with a fabulous open plan living room and sophisticated kitchen with integrated appliances, two double bedrooms, with a luxury en-suite shower room, en-suite bathroom and walk-in dressing room, plus a guest W.C.

Two full-width terraces to the west and east are a particular feature, providing a lovely area to relax or entertain and enjoy the sun and views, there is also a secure gated parking space.

Featuring stylishly subtle materials including - walnut flooring, American oak interior doors, stainless-steel ironmongery, limestone and granite surfaces, ambient lighting, wet thermal underfloor heating and a lift.

Ideally located to take advantage of all that Strawberry Hill has to offer, from the delightful Radnor Gardens on the river to the ambient restaurants and charming riverside pubs and walks. Situated within easy access of both Richmond and Kingston with more comprehensive amenities. Commuter links are excellent with two stations providing direct services to London Waterloo, frequent bus routes and easy access to the M3/M25 motorways and Heathrow Airport. The surrounding area is well suited for family life with numerous recreational facilities, fabulous golf courses, riding stables and sports amenities. Nearby, Strawberry Hill House, host to the annual Strawberry Hill Music Festival, is internationally renowned as Britain's finest example of Georgian Gothic Revival architecture. Some excellent schools including St James's RC Primary School, Waldegrave School and Twickenham Primary Academy, rated 'outstanding' by Ofsted are all close by.





Waldegrave Road

Approx. Gross Internal Floor Area

143.6 Sq M - 1546 Sq Ft

Chase Buchanan

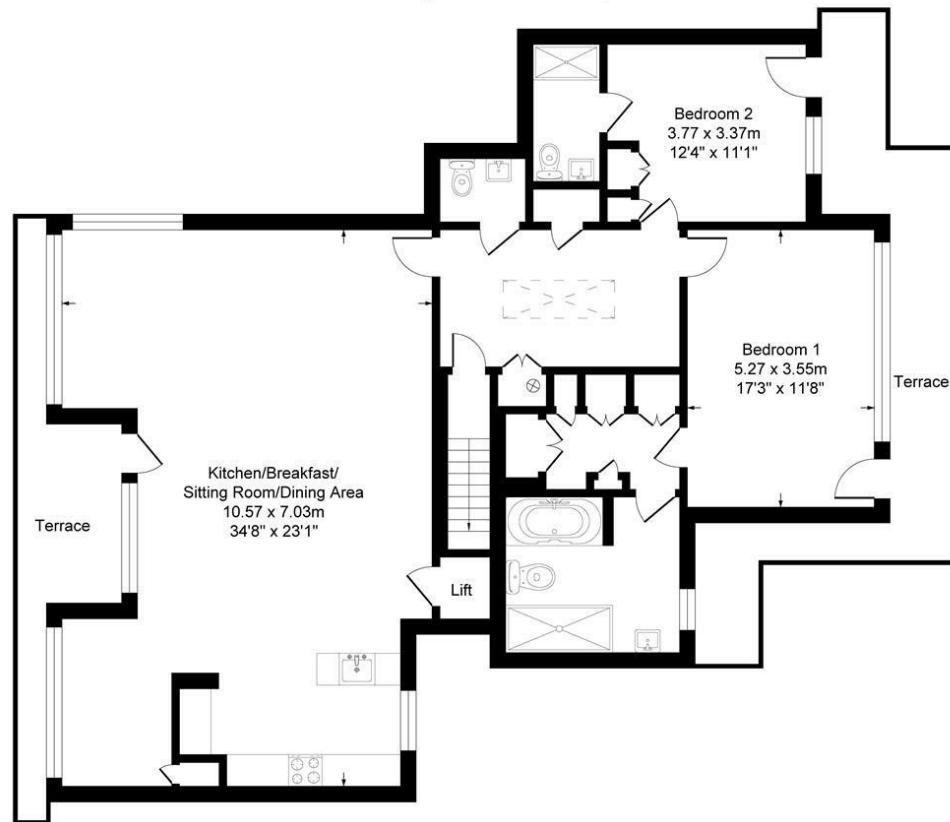


Illustration for identification purposes only, measurements are approximate, not to scale.

For more information or to book a viewing, please contact:

020 8744 0101

twickenham@chasebuchanan.london

4 York Street, TW1 3LD

Care has been taken in the preparation of these particulars, however, their accuracy is not guaranteed and they do not form part of any contract. Measurements stated must be considered maximum.

| Energy Efficiency Rating | | Current | Potential | Environmental Impact (CO ₂) Rating | | Current | Potential |
|---|--|---------|-----------|---|--|---------|-----------|
| Very energy efficient - lower running costs | | | | Very environmentally friendly - lower CO ₂ emissions | | | |
| (92 plus) A | | | | (92 plus) A | | | |
| (81-91) B | | | | (81-91) B | | | |
| (69-80) C | | | | (69-80) C | | | |
| (55-68) D | | | | (55-68) D | | | |
| (39-54) E | | | | (39-54) E | | | |
| (21-38) F | | | | (21-38) F | | | |
| (1-20) G | | | | (1-20) G | | | |
| Not energy efficient - higher running costs | | | | Not environmentally friendly - higher CO ₂ emissions | | | |
| England & Wales | | | | England & Wales | | | |
| EU Directive 2002/91/EC | | | | EU Directive 2002/91/EC | | | |

Chase Buchanan