



**Court Way
Twickenham**

£930,000

ChaseBuchanan

Key Features

- Viewings accompanied by Chase Buchanan
- Spacious family house
- Four bedrooms
- South facing garden
- Chain free
- Garage
- Close to station
- Off street parking
- Excellent schools nearby
- Riverside and parks close by

Description

A substantial four-bedroom semi-detached family home, which is perfectly located for all the local amenities.

The property comprises to the ground floor, a front reception room, a second rear reception room, a galley kitchen, a conservatory and a cloakroom.

On the first floor, there is a large double bedroom with fitted wardrobes, a second double bedroom also with fitted wardrobes, a smaller single room with built-in storage and a family bathroom with a separate W.C.

The second floor has a further good-sized double bedroom with the scope to increase the size and add another bathroom.

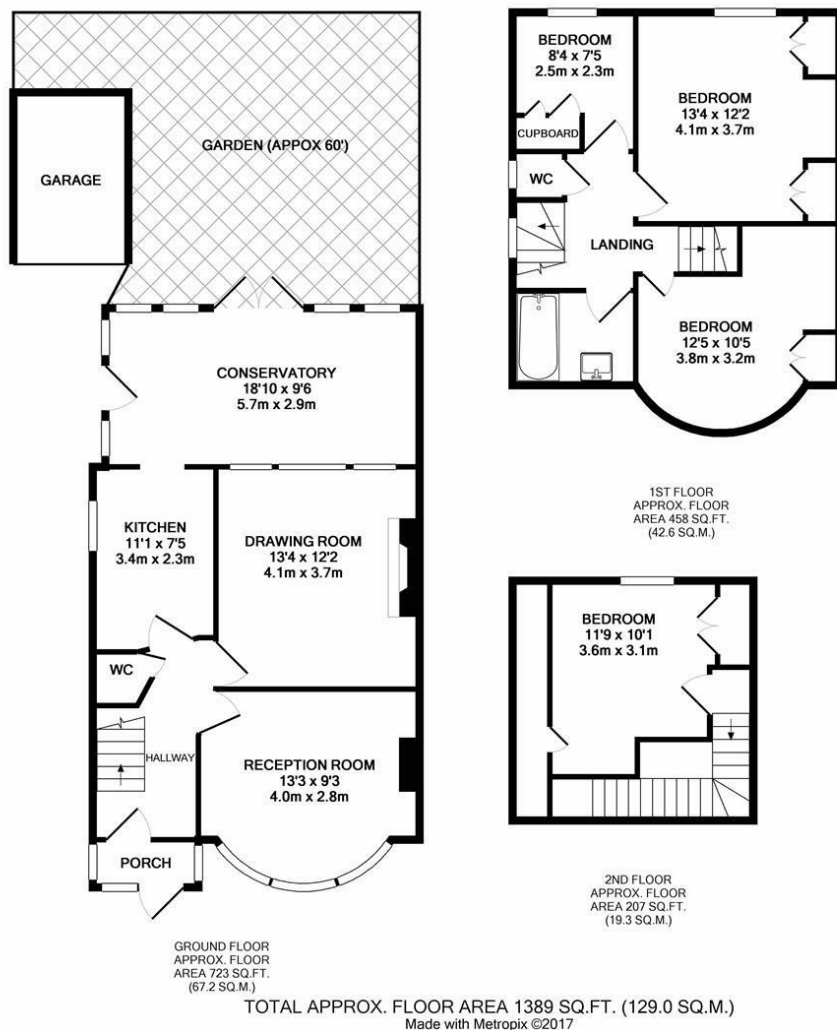
Further benefits include off-street parking, a good size south-facing garden, a garage and scope for further expansion, plus no onward chain.

There are good transport links in the area, with Twickenham station a short walk away, providing frequent, direct services to London Waterloo and regular buses into Richmond (District line tube) and Kingston. And a short drive to the M3, with good access to the M25/M4. The local area is well served by schools, both private and state-run, including St Richards Reynolds School.

To arrange a viewing please contact the vendors' sole agent Chase Buchanan.







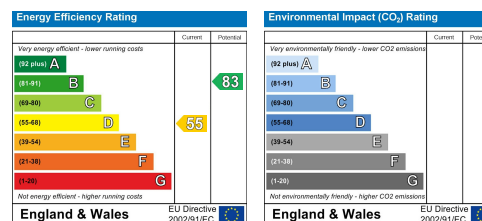
For more information or to book a viewing, please contact:

020 8744 0101

twickenham@chasebuchanan.london

4 York Street, TW1 3LD

Care has been taken in the preparation of these particulars, however, their accuracy is not guaranteed and they do not form part of any contract. Measurements stated must be considered maximum.



ChaseBuchanan