



**Tennyson Avenue  
Twickenham**

**£1,350,000**

**ChaseBuchanan**

## Key Features

- Viewings accompanied by Chase Buchanan
- Double fronted family home
- Very well-presented throughout
- Spacious living spaces
- Well designed kitchen
- Three bedrooms
- Attractive, mature garden
- Garage & parking
- Excellent schools nearby
- Chain free

## Description

Situated in a highly desirable area, this double-fronted family home combining traditional and modern features is close to both Twickenham & Strawberry Hill amenities and some excellent schools.

With well-proportioned living spaces and a pleasing décor throughout, the ground floor has a spacious entrance hall leading into an elegant reception room with a wide bay window and a feature fireplace, a dining room and a further living room, plus a well-designed kitchen with plenty of preparation areas and a guest W.C. Upstairs provides three bedrooms and a smart family bathroom.

Outside, the attractive and secluded garden has been beautifully maintained with an abundance of mature plants and trees with a patio area, perfect for 'al-fresco' dining and relaxing, plus a further vegetable garden and a garage with parking in front.

Very well-presented throughout, with a bright aspect, some notable features include, high ceilings, feature fireplaces, double-glazed windows, 'Amtico' flooring, plenty of storage options and the potential to extend further (STPP) all adding to the appeal.

Ideally located to take advantage of all that Strawberry Hill and Twickenham have to offer, from the delightful Radnor Gardens on the river to the ambient restaurants and charming riverside pubs and walks. Situated within easy access of both Richmond and Kingston with more comprehensive amenities. Commuter links are excellent with two stations providing direct links to London Waterloo, frequent bus routes and easy access to the M3/M25 motorways and Heathrow Airport. The surrounding area is well suited for family life with numerous recreational facilities, fabulous golf courses, riding stables and local sports teams. The acclaimed Lensbury Club is easily accessible, providing an extensive range of sailing and leisure facilities and some excellent schools including St Richard Reynolds, Waldegrave School and Twickenham Primary Academy, rated 'outstanding' by Ofsted.





# Tennyson Avenue TW1

Approx. Gross Internal Floor Area  
131.2 Sq M - 1413 Sq Ft

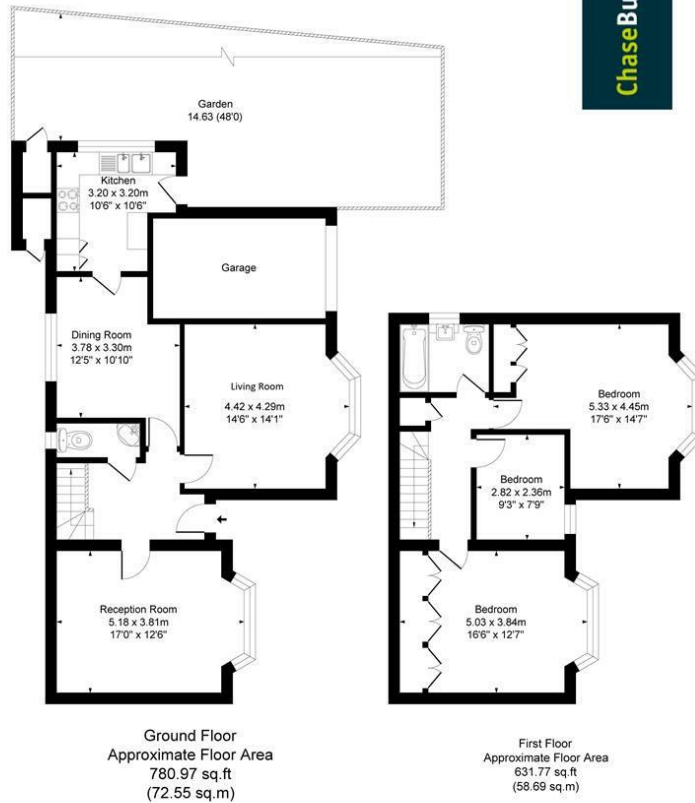
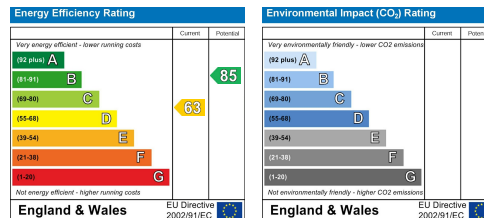


Illustration for identification purposes only, measurements are approximate, not to scale.  
Produced By Esjay Property Marketing

Care has been taken in the preparation of these particulars, however, their accuracy is not guaranteed and they do not form part of any contract. Measurements stated must be considered maximum.



For more information or to book a viewing, please contact:

**020 8744 0101**

twickenham@chasebuchanan.london

4 York Street, TW1 3LD

**ChaseBuchanan**